



We Are Dispensers

Tape Dispensers

Label Dispensers

Non-Adhesive Cutters

## INDUSTRIAL SOLUTIONS



[www.STARTinternational.com](http://www.STARTinternational.com)

Product Catalog

## TABLE OF CONTENTS



### Tape Dispensers. . . . . 2-15

Electronic Tape Dispensers  
Manual Tape Dispensers  
Specialty Tape Applications  
Gummed (Water Activated)  
Tape Dispensers



### Label Dispensers. . . . . 16-23

Electric Label Dispensers  
Specialty Label Applications  
Manual Label Dispensers  
Hand-Held Label Applicators  
Die-Cut Part Dispenser



### Non-Adhesive Cutters. . . 24-27

Industrial Heavy-Duty Cutters  
Light-Duty Cutters



### Tape Compatibility Chart. . . 28

### Machine Quick Reference. . . 29

### Accessories . . . . . 30-31

### Material Evaluation Form . . . 32

## Trusted Quality

With over 30 years of experience building reliable products, quality is more than a concept. Make sure to check for the START International Trusted Quality indicator to ensure quality for years to come.



# Over 30 Years of Excellence

Our Founder:  
**Dan Sternberg**  
1943 - 2009

*His passion,  
principals and  
values carry  
on with us.*



## ABOUT

START International has provided solutions for manufacturing companies worldwide since 1981. We provide the service and expertise that are required to ensure that our customers are fitted with the best equipment for the job. Our company is built on adding value to production lines and building relationships with our customers.

## MISSION

START's mission is to continuously provide the highest quality products, build and maintain relationships with our customers, and to constantly improve the customer service experience.

## INNOVATION

START's best product innovations come from simple observations combined with a keen understanding of our customers' needs. Most companies design their products specifically to increase sales volume. START's main goal is not to create a bestseller, but to enhance customers' operations. To attain that goal, our product design engineers develop value-added products. Our approach begins with our unequalled information gathering techniques. With this unique approach to product development we are able to provide the highest quality and most effective products for our customers.

As you flip through this catalog, you will see how our product line is designed to fit virtually any taping and labeling application.

### Experts waiting to help.

*Whether you need help selecting the right product for your application or need advice, START International provides you with comprehensive service you can rely on.*

Todd S.



81	90	97	02	08	12
SEPTEMBER 1981 START MANUFACTURING, INC. FOUNDED	OCTOBER 1990 PCB CATALOG BECOMES INDUSTRY STANDARD	JULY 1997 START PIONEERS USE OF PHOTO SENSORS IN LABEL DISPENSERS	SEPTEMBER 2002 ZCM1000 ELECTRIC TAPE DISPENSER INTRODUCED	AUGUST 2008 LAB01 BOTTLE LABELER INTRODUCED	2012 START LAUNCHES NEW BRAND OF ELECTRIC DISPENSERS



## AUTOMOTIVE

### Tape Dispensers

Wire Harnessing  
Double Face or VHB  
Application  
Parts Assembly  
Paint Masking  
Parts Pass-Fail Process

### Label Dispensers

Product ID  
Safety Notification  
Die-Cut Double Face  
Die-Cut Gaskets

### Non-Adhesive Cutters

Heat Shrink Tubing  
Sleeving  
Stripping  
Seat Belts  
Ribbon  
Mesh



## ELECTRONICS / ELECTRICAL

### Tape Dispensers

PCB Masking  
Conductive Transfer Tape  
Protective Film  
Component Mounting  
Transformers  
Motors  
Ballasts  
General Coil Winding

### Label Dispensers

Board Identification (Barcode)  
Product Identification  
Humidity/Heat Sensing Dots



## RENEWABLES

### Tape Dispensers

Charge-Collecting  
Acrylic Foam  
Dielectric  
VHB

### Non-Adhesive Cutters

Heat Shrink Tubing  
Sleeving  
Thin Films

### Label

Dispensers  
Die-Cut Parts  
Labels

# Let START fit your application



## FOOD / BEVERAGE

### Tape Dispensers

Safety Seal  
Bag Sealing  
Box Sealing

### Label Dispensers

Product Identification  
Logo Placement  
Safety Seal  
Hang Tabs

Date Codes  
Award Labels  
Promotional Labels  
Nutritional Info Labels



## APPLIANCE

### Tape Dispensers

Securing Wires and Cables  
Securing Loose Parts  
Securing Moving Parts  
Protective Film  
Battery Manufacturing  
Bonding, Joining, and Fastening

### Label Dispensers

Product ID  
Battery Manufacturing  
Logo Placement  
RFID  
Protective Film  
Safety Labeling



## SHOE MANUFACTURING

### Tape Dispensers

Cloth Tapes  
Double Transfer

### Non-Adhesive Cutters

Ribbon  
Leather  
Cloth  
Shoelaces  
Elastics  
Velcro®

### Label Dispensers

Product ID  
Size ID



## PACKAGING

### Tape Dispensers

Box Sealing  
Bag Sealing

### Label Dispensers

Product ID  
Care Instructions  
Logo Placement  
RFID



## PHARMACEUTICAL / MEDICAL

### Tape Dispensers

Safety Seal  
RFID

### Label Dispensers

Product Identification  
Safety Seal

# TAPE Dispensers

## Imitated. Never Replicated.



### USABILITY

Easy set-up and operation, with virtually no operator training needed.



### PRECISION

Each piece is cut clean for accurate and attractive tape presentation.



### EFFICIENCY

Increase productivity and reduce material costs.



### VERSATILITY

Virtually any tape can be dispensed on our machines for use in a variety of applications.

## PROVEN MATERIALS FOR OUR TAPE DISPENSERS



MYLAR®



VHB®



APPLIANCE  
FILAMENT



STRAPPING



TENSILIZED  
POLYPROPYLENE



ALUMINUM FOIL



POLYESTER  
MASKING



KAPTON®



Glenn K.  
and Betty S.

Look for the START  
holographic seal to ensure  
product authenticity!





# Unparalleled Performance For 30 Years

**TAPE Dispensers**

**Electronic**



## zcM1000

### Electronic Tape Dispenser

- Ideal for medium to high production of repetitive taping for industrial applications
- Program a defined length and automatically advance and cut tape
- Accepts tape widths from .28" to 2" (7 to 51mm)
- Cuts tape lengths from .79" to 39" (20 to 999mm)
- Made in Japan



Previous Model

### Features

3-IN-1 CORE HOLDER

EASY TO OPERATE



### Applications



Additional info for **zcM1000**

- Photocell actuated feed & cut or push-button feed & cut
- Guillotined cut for a straight edge piece of tape
- LED Digital length adjustment
- Manual override of preset lengths
- Blades good for up to 200,000 cuts (dependent on type of material)
- Steel frame for durability
- Cabinet made from flame retardant antistatic composite (auto ignition of 896° F/ 480°C)
- Comes with a 3-in-1 core (1" (25mm), 1.4" (35mm), 3" (76mm))
- Adjustable pressure roller for various thicknesses of tape
- Accuracy of tape length is +/- .04" (1mm) (dependent on type of material)
- Many available accessories fit this machine. See Accessories section.
- All 230V machines are **CE** Certified



### Accessory Options

See page 30 or visit  
[www.STARTinternational.com/TD/Accessories](http://www.STARTinternational.com/TD/Accessories)

Visit [www.STARTinternational.com/](http://www.STARTinternational.com/)  
Videos to see our dispensers  
in action.

For 230V machines,  
please add "-2" to the  
end of the model number.  
(Example: zcM1000-2)

MODEL #	Tape Width	Cut Length	Max. Outside Dia. of Roll	3-in-1 Core Holder	Accuracy of Cut**	Length Setting	Weight	Dimensions
zcM1000	.28 to 2.0" (7 to 51mm)	.79 to 39" (20 to 999mm)	7" (178mm)	1", 1.4", 3" (25, 35, 76mm)	+/- .04" (1mm)	digital (LED)	5.3 lbs (3.4 kg)	9.7" (L) x 5.4" (W) x 5.9" (H) 24.5cm (L) x 13.7cm (W) x 15cm (H)

Electrical requirements: 117V 50/60Hz, <1 amp (230V 50/60Hz **CE** available) \*\* dependent on material

## Electronic

Additional info for  
**zcM1000 Modifications**  
 Can be found on Page 3 or at  
[www.STARTinternational.com/zcM1000](http://www.STARTinternational.com/zcM1000)



### Accessory Options

See page 30 or visit  
[www.STARTinternational.com/zcMAccessories](http://www.STARTinternational.com/zcMAccessories)

For 230V machines,  
 please add "-2" to the  
 end of the model number.  
 (Example: zcM1000-2)

### zcM1000B

#### For Narrow Tapes

- Special advancement roller for extra narrow tapes (1/8" (3mm)) or thin tapes
- Accepts tape widths from .125" to 1" (3 to 25mm)
- Cuts tape lengths from .79" to 39" (20 to 999mm)



### zcM1000C

#### For Glass Cloth Tapes

- Modified cutting head for flimsy and glass cloth tapes
- Accepts tape widths from .28" to 2" (7 to 51mm)
- Cuts tape lengths from .79" to 39" (20 to 999mm)



### zcM1000D

#### For Extra Short (5mm) Pieces of Tape

- Modified circuit board for minimum length setting of .2" (5mm)
- Accepts tape widths from .28" to 2" (7 to 51mm)
- Cuts tape lengths from .2" to 39" (5 to 999mm)
- Photosensor unable to detect 5mm pieces. Suggested to use tweezers.



### zcM1000E

#### For Dispensing Two Rolls of Tape

- Modified cutting head with dual photo sensors for dispensing two rolls of tape
- Accepts tape widths from .28" to 2" (7 to 51mm)
- Cuts tape lengths from .79" to 39" (20 to 999mm)



### zcM1000K

#### With Creaser

- Minimum length setting of .2" (5mm)
- Accepts tape widths from .5" to 1.1" (12 to 28mm)
- Photosensor unable to detect 5mm pieces. Tweezers are suggested for tape removal.



### zcM1000T

#### For Thin Tapes

- Special advancement system to help dispense thin tapes
- Accepts tape widths from .28" to 2" (7 to 51mm)
- Cuts tape lengths from .79" to 39" (20 to 999mm)



### zcM1000NM

#### For Protective Film

- Modified zcM1000 with special non-marking advancement rollers for protective films
- Program a defined length and automatically advance and cut tape
- Accepts tape widths from .28" to 2" (7 to 51mm)
- Cuts tape lengths from .79" to 39" (20 to 999mm)



### zcM1000NS

#### For Double-Sided and VHB Tapes

- Special advancement roller for double-sided and VHB tapes
- Accepts tape widths from .28" to 2" (7 to 51mm)
- Cuts tape lengths from .79" to 39" (20 to 999mm)



MODEL #	Tape Width	Cut Length	Max. Outside Dia. of Roll	3-in-1 Core Holder	Accuracy of Cut**	Length Setting	Weight	Dimensions
zcM1000	.28 to 2" (7 to 51mm)	.79 to 39" (20 to 999mm)	7" (178mm)	1", 1.4", 3" (25, 35, 76mm)	+/- .04" (1mm)	digital (LED)	5.3 lbs (3.4 kg)	9.7" (L) x 5.4" (W) x 5.9" (H) 24.5cm (L) x 13.7cm (W) x 15cm (H)

Electrical requirements: 117V 50/60Hz, <1 amp (230V 50/60Hz CE available) \*\* dependent on material



## Electronic

### zcM2000

#### Electronic Tape Dispenser With Multiple Programmable Tape Lengths

- Program 3 defined lengths and automatically advance and cut tape zcM2000X features 10 defined lengths
- Two operating modes: on demand lengths or consecutive
- Accepts tape widths from .28" to 2" (7 to 51mm)
- Cuts tape lengths from .79" to 39" (20 to 999mm)



Example: 30, 45, 60mm

### zcM3000

#### Electronic Tape Dispenser with 3 Programmable Lengths and Counter

- Tape dispenser equipped with counter
- 3 length memory
- Automatically feed & cut
- Digital length adjustment
- Accepts tape widths from .28" to 3" (7 to 76mm)
- Cuts tape lengths from 1.6" to 39" (40 to 999mm)



#### Additional info for zcM2000

- Photocell actuated feed & cut or push-button feed & cut
- Guillotined cut for a straight edge piece of tape
- LED Digital length adjustment
- Manual override of preset lengths
- Blades good for up to 200,000 cuts (dependent on type of material)
- Steel frame for durability
- Cabinet made from flame retardant antistatic composite (auto ignition of 896° F/ 480°C)
- Comes with a 3-in-1 core (1" (25mm), 1.4" (35mm), 3" (76mm))
- Adjustable pressure roller for different thicknesses of tape
- Accuracy of tape length is +/- .04" (1mm) (dependent on type of material)
- Many available accessories fit this machine. See Accessories section.
- All 230V machines are CE Certified



#### Accessory Options

See page 30 or visit [www.STARTinternational.com/zcMAccessories](http://www.STARTinternational.com/zcMAccessories)

For 230V machines, please add "-2" to the end of the model number. (Example: zcM2200-2)

MODEL #	Tape Width	Programmable Memory	Cut Length	Max. Outside Dia. of Roll	3-in-1 Core Holder	Accuracy of Cut**	Length Setting	Weight	Dimensions
zcM2000	.28 to 2.0" (7 to 51mm)	3	.79 to 39" (20 to 999mm)	7" (178mm)	1", 1.4" 3" (25, 35, 76mm)	+/- .04" (1mm)	digital (LED)	5.8 lbs (2.63 kg)	9.7"(L) x 5.4"(W) x 5.9"(H) 24.5cm(L) x 13.7cm(W) x 15cm(H)

Electrical requirements: 117V 50/60Hz, <1 amp (230V 50/60Hz CE available) \*\* dependent on material

MODEL #	Tape Width	Program Memory	Counter/Display	Cut length	Max. Outside Dia. of Roll	Core Holder	Accuracy of Cut*	Tape Cutter	Feed Type	Length Setting	Counter	Weight
zcM3000	.28 to 3" (7 to 76mm)	3	yes/digital (LED)	1.6 to 39" (40 to 999mm)	8" (203mm)	3" (76mm)	+/- .04" (1mm)	automatic	automatic	digital (LED)	Increase and decrease	14.6 lbs (6.62 kg)

Dimensions: 10.3"(26cm)L x 7.9"(20cm)W x 9.1"(23cm)H

Electrical requirements: 117V 50/60Hz, <1 amp (230V 50/60Hz CE available) \*dependent on material

## Electronic

Additional info for **zcM1100** & **zcM2200**

- Photocell actuated feed & cut or push-button feed & cut
- Guillotined cut for a straight edge piece of tape
- LED Digital length adjustment
- Manual override of preset lengths
- Blades good for up to 200,000 cuts (dependent on type of material)
- Steel frame for durability
- Cabinet made from flame retardant antistatic composite (auto ignition of 896° F/ 480°C)
- Comes with a 3-in-1 core (1" (25mm), 1.4" (35mm), 3" (76mm))
- Adjustable pressure roller for different thicknesses of tape
- Accuracy of tape length is +/- .04" (1mm) (dependent on type of material)
- Many available accessories fit this machine. See Accessories section.
- All 230V machines are **CE** Certified

### Suggested accessory:

zcM1000P026

External Reel Stand –  
Max. OD 9.45" (240mm)

See Accessories Page 30



For the **zcM1100** and the **zcM2200**, the **B, K, T** and **NM** modifications are now available.

For 230V machines, please add "-2" to the end of the model number.  
(Example: **zcM1100-2**)

### zcM1100

#### Electronic Tape Dispenser with Safety Guard Cutting Head

- Safety guard system prevents activation of cutter when foreign objects are present (fingers, tools, etc.)
- Ideal for medium to high production of repetitive taping for industrial applications
- Program a defined length and automatically advance and cut tape
- Accepts tape widths from .28" to 2" (7 to 51mm)
- Cuts tape lengths from 1.2" to 39" (30 to 999mm)
- Made in Japan



Safety Mechanism

While it is not recommended to place foreign objects in the cutting area, the **zcM1100** and **zcM2200** are inoperable when the cutting head is obstructed.

### zcM2200

#### Electronic Tape Dispenser with Safety Guard Cutting Head and 3 Programmable Tape Lengths

- Safety guard system prevents activation of cutter when foreign objects are present (fingers, tools, etc.)
- Program 3 defined lengths and automatically advance and cut tape
- Ideal for medium to high production of repetitive taping for industrial applications
- Two operating modes: on demand lengths or consecutive
- Accepts tape widths from .28" to 2" (7 to 51mm)
- Cuts tape lengths from 1.2" to 39" (30 to 999mm)
- Made in Japan



MODEL #	Tape Width	Programmable Memory	Cut Length	Max. Outside Dia. of Roll	3-in-1 Core Holder	Accuracy of Cut**	Length Setting	Weight	Dimensions
<b>zcM1100</b>	.28 to 2.0" (7 to 51mm)	1	1.2 to 39" (30 to 999mm)	7" (178mm)	1", 1.4", 3" (25, 35, 76mm)	+/- .04" (1mm)	digital (LED)	6 lbs (2.72 kg)	9.8"(L) x 5.4"(W) x 6.2"(H) 25cm(L) x 14cm(W) x 16cm(H)
<b>zcM2200</b>	.28 to 2.0" (7 to 51mm)	3	1.2 to 39" (30 to 999mm)	7" (178mm)	1", 1.4" 3" (25, 35, 76mm)	+/- .04" (1mm)	digital (LED)	6 lbs (2.72 kg)	9.8"(L) x 5.4"(W) x 6.2"(H) 29cm(L) x 14cm(W) x 16cm(H)

Electrical requirements: 117V 50/60Hz, <1 amp (230V 50/60Hz **CE** available) \*\* dependent on material



# Designed for the Most Demanding Production Environments

**TAPE** Dispensers

## Electronic



### TDA080

#### Electronic "Heavy-Duty" Tape Dispenser

- Ideal for high production of repetitive taping for industrial applications
- Program a defined length and automatically advance and cut tape
- Accepts tape widths from .25" (6mm) to 3.13" (80mm)
- Cut lengths from 1.6" (40mm) to 394" (9999mm)

#### Features

4 OPERATING MODES



SOLID CONSTRUCTION,  
STEEL GEARS



STANDARD ROLLERS



#### Applications

PAINT MASKING



MOTOR MANUFACTURING



PROTECTIVE FILM



#### Additional info for TDA080

- Heavy-duty metal construction
- All metal gears and advancement rollers
- 4 modes of operation: manual feed-manual cut, manual feed and cut, auto feed and cut and interval feed and cut
- Guillotined cut for a straight edge piece of tape
- Digital push switch display for easy length adjustments
- Safety interlock
- Accuracy +/- .04" (1mm) (dependent on type of tape)
- 9" (229mm) maximum outside diameter roll
- Comes with 3" (76mm) core
- Optional foot switch available, see Accessories section
- All 230V machines are CE Certified



#### Suggested accessory:

TDSTAND03  
Max. OD 20" (508mm)

See Accessories Page 31

For 230V machines,  
please add "-2" to the  
end of the model number.  
(Example: TDA080-2)

MODEL #	Tape Width	Cut Length	Max. Outside Dia. of Roll	Core Diameter	Accuracy of Cut*	Weight	Footprint	Dimensions
TDA080	.25 to 3.15" (6 to 80mm)	1.6 to 394" (40 to 9999mm)	9" (228mm)	3" (76mm)	+/- .04" (1mm)	21 lbs (9.5 kg)	9.25(L) X 6.75"(W) (235 X 172mm)	9"(L) x 6.625"(W) x 12"(H) 229mm(L) x 168mm(W) x 305mm(H)

Electrical requirements: 115V 50/60Hz <2 amps (230V 50/60Hz CE available) \* Dependent on material. \*\* Dimensions for TDA080-LAM and TDA080-LR are larger than other TDA080's. Please call for exact specifications.

## Electronic

Additional info for

### TDA080 Modifications

- Heavy-duty metal construction
- All metal gears and advancement rollers
- 4 modes of operation: manual feed-manual cut, manual feed and cut, auto feed and cut and interval feed and cut
- Guillotined cut for a straight edge piece of tape
- Digital push switch display for easy length adjustments
- Safety interlock
- Accuracy +/- .04" (1mm) (dependent on type of tape)
- 9" (229mm) maximum outside diameter roll
- Comes with 3" (76mm) core
- All 230V machines are CE Certified

### Suggested accessory:

TDSTAND03  
Max. OD 20" (508mm)

See Accessories Page 31



For 230V machines,  
please add "-2" to the  
end of the model number.  
(Example: TDA080-NS-2)

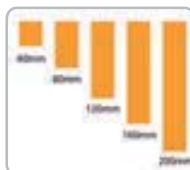
## TDA080-M

### Programmable 5 Length Memory

- Program up to 5 lengths into memory and automatically advance and cut tape
- Ideal for high production of repetitive taping for industrial applications
- Accepts tape widths from .25" (6mm) to 3.15" (80mm)
- Cuts lengths from 1.6" (40mm) to 394" (9999mm)



PROGRAMMABLE  
5 LENGTH MEMORY



## TDA080-NM

### For Protective Films

- Special Non-Marking tape advancement rollers for protective films and foil tapes
- Ideal for high production of repetitive taping for industrial applications
- Program a defined length and automatically advance and cut tape
- Accepts tape widths from .25" (6mm) to 3.15" (80mm)
- Cut lengths from 1.6" (40mm) to 394" (9999mm)



SMOOTH ROLLERS



## TDA080-LR

### For Tapes on a Liner

- Modified TDA080 with additional liner remover to remove inside liner of aluminum and other lined tapes
- Ideal for high production of repetitive taping for industrial applications
- Program a defined length and automatically advance and cut tape
- Accepts tape widths from .25" (6mm) to 2" (50mm)
- Cut lengths from 1.6" (40mm) to 394" (9999mm)



## TDA080-NS

### For FOAM Tapes

- Special Non-Stick tape advancement rollers for Foam and High Tack tapes
- Ideal for high production of Foam and High Tack tape applications
- Program a defined length and automatically advance and cut tape
- Accepts tape widths from .25" (6mm) to 3.15" (80mm)
- Cut lengths from 1.6" (40mm) to 394" (9999mm)
- Maximum material thickness: .125" (3mm) foam, .0625" (1.5mm) VHB®. Materials beyond the specification must be tested; See Material Evaluation form on Page 32.
- Machine shown with optional reel stand (TDSTAND03 - See Page 31)



COATED ROLLERS



## TDA080-NMNS

### For Foil Tapes

- Special Non-Marking & Non-Stick advancement rollers for High Tack foil tapes
- Ideal for high production of repetitive taping for industrial applications
- Two operating modes: on demand lengths or consecutive
- Program a defined length and automatically advance and cut tape
- Accepts tape widths from .25" (6mm) to 3.15" (80mm)
- Cut lengths from 1.6" (40mm) to 394" (9999mm)



## TDA080-LAM

### Laminator Feature

- Modified TDA080 which laminates two rolls of tape together
- Ideal for high production of repetitive taping for industrial applications
- Laminates, dispenses and cuts tape to predetermined definite lengths
- Accepts tape widths from .25" (6mm) to 2" (50mm)
- Cut lengths from 1.6" (40mm) to 394" (9999mm)



# Heavy-Duty Wide Tape Dispensers

TAPE Dispensers

*Electronic*



## TDA150

### Electronic "Heavy-Duty" Tape Dispenser – 150mm Wide

- Ideal for high production of repetitive taping for industrial applications
- Program a defined length and automatically advance and cut tape
- Accepts tape widths from .25" to 5.9" (6 to 150mm)
- Cuts lengths from 1.6" to 394" (40 to 9999mm)

#### Additional info for TDA150

- Heavy-duty metal construction
- All metal gears and advancement rollers
- 4 modes of operation: manual feed-manual cut, manual feed and cut, auto feed and cut, and interval feed and cut
- Guillotined cut for a straight edge piece of tape
- Digital push switch display for easy length adjustments
- Safety interlock
- Accuracy +/- .04" (1mm) (dependent on type of tape)
- 9" (251mm) maximum outside diameter roll
- Comes with 3" (76mm) core
- All 230V machines are CE Certified



## TDA150-NS

- Modified TDA150 with special tape advancement rollers **for foam and high tack tapes**
- Materials beyond this thickness must be tested: see Material Evaluation form on Page 32



## TDA150-NM

- Modified TDA150 with special non-marking advancement rollers **for protective films and foil tapes**
- Materials beyond this thickness must be tested: see Material Evaluation form on Page 32

For 230V machines, please add "-2" to the end of the model number. (Example: TDA150-2)

MODEL #	Tape Width	Cut Length	Max. Outside Dia. of Roll	Core Diameter	Accuracy of Cut*	Weight	Dimensions
TDA150	.25 to 5.9" (6 to 150mm)	1.6 to 394" (40 to 9999mm)	9" (251mm)	3" (76mm)	+/- .040" (+/- 1mm)	38 lbs. (17.2 kg)	10" (L) x 13" (W) x 13" (H) 25.4cm (L) x 33.0cm (W) x 33.0cm

Electrical requirements: 115V 50/60Hz <2 amps (230V 50/60Hz CE available) \* Dependent on material.

Electronic

- Additional info for **TDA025B**
- Allows up to 20 pieces of tape to be cut at the touch of a button
  - Accepts 1", 1.25" and 3" (25, 32, 76mm) core diameter tapes
  - Safety switch on cover
  - All 230V machines are **CE** Certified

The latest in

Carousel

Dispensing



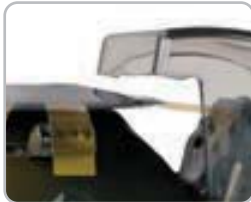
TDA025B

Electric Carousel Tape Dispenser

- Ideal for multi-operator applications
- Automatically feed and cut tape to a definite length
- Unique feed system places tape on carousel for easy removal
- Accepts tape widths from .12" to .98" (3 to 25mm)
- Cuts lengths from .6" to 2.76" (15 to 70mm)

Features

PHOTOSENSOR ACTUATION



ONE-TOUCH ROTATION



For 230V machines,  
please add "-2" to the  
end of the model number.  
(Example: TDA025-2)

MODEL #	Tape Width	Cut Length	Max. Outside Dia. of Roll	Core Diameter	Accuracy of Cut*	Tape Cutter	Feed Type	Adjustable Tape Spacing	Length Setting	Weight
TDA025B	.12 to .98" (3 to 25mm)	.6 to 2.76" (15 to 70mm)	5.9" (150mm)	Universal	.08" (2mm)	automatic	carousel	yes	manual	4.2 lbs (1.9 kg)

Dimensions: 11.8"(30cm)L x 6.3"(16cm)W x 6.3"(16cm)H    Electrical requirements: 117V 50/60Hz, <1 amp (230V 50/60Hz **CE** available)    \*dependent on material



Wrappers

TDW019

Manual Tape Wrapper

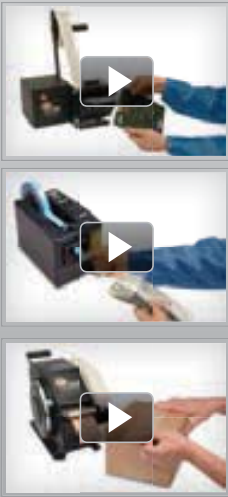
- Efficiently wrap tape around wires, harnesses, bundles, tubing, etc.
- Accepts tape widths from .38 - .75" (9 – 19mm)
- Maximum bundle diameter of 2" (51mm)
- Heavy-duty solid aluminum frame construction



Additional info for **TDW019**

- Simple, compact and easy to use
- Holes in base to mount to workbench
- Uses any brand of tape
- Totally maintenance free
- Safety blade guard
- 7" (178mm) maximum outside roll diameter
- 1.5" (38mm) tape core provided
- Optional tape cores:  
-1.25" (32mm): Part # TDW019-04A  
-3" (76mm): Part # TDW019-04C

See our machines in action on **YouTube**



[www.YouTube.com/Startintl](http://www.YouTube.com/Startintl)

For 230V machines,  
please add "-2" to the  
end of the model number.  
(Example: TDA025-2)

MODEL #	Max. Bundle	Max. Tape Width	Max. Outside Dia. of Roll	Core Diameter	Weight	Dimensions
TDW019	2" (51mm)	.75" (19mm)	7" (178mm)	1.5" (38mm)	5 lbs (2.27kg)	10.5 x 6 x 11.25" (267 x 152 x 287mm)

# TAPE Dispensers

## Electric / Manual

### Additional info for **zcM0300**

- Easy lever adjustment to set length of tape
- Tape is cut by pulling up across a serrated blade
- Heavy base for stability
- Easy to load tape
- Maximum outside diameter of roll is 4.75" (120mm)
- Comes with a 3" (76mm) core

### Additional info for **zcM0800 & zcM0900**

- Comes with 1" (25mm) and 3" (76mm) cores
- Available with optional AC adaptor
- Tape is cut by raising and pulling up across a serrated blade, which activates a switch to advance the next piece of tape.
- Battery operated or AC adaptor operated

### Additional info for **TDM080**

- Longer lengths can be dispensed by repeating lever stroke
- Easy lever adjustment to set length of tape
- Tape is cut by pulling up across a sharp blade
- Maximum outside roll diameter of 9" (229mm)
- Heavy-duty steel base and lever arm
- Holes in base to mount to workbench

## zcM0800

### Electric Tape Dispenser

- Ideal entry level dispenser for low to medium production with thin film tape
- Automatically advances tape, manual cut
- Dispense tape from .25" (6mm) to 1" (25mm) in width
- 3 fixed lengths: 1.18" (30mm), 1.77" (45 mm), 3.54" (90mm)
- Three D-sized batteries required (not included)
- Universal 100-240V AC Adapter available with **zcM0800-WT** model

## zcM0900

### Electric Tape Dispenser with 14 Programmable Lengths

- Same features as the zcM0800 plus:
- Dispense tape from 1.2" to 3.75" (30 to 95mm) in length
- 14 pre-set lengths adjustable in 5mm intervals
- Three D-sized batteries required (not included)
- Universal 100-240V AC Adapter available with **zcM0900-WT** model

## zcM0300

### Manual Tape Dispenser with Hand Lever

- Ideal for low volume production
- Definite length tape dispenser
- Dispense tape from .25" to 1" (6 to 25mm) in width
- Dispense tape from .50" to 4" (13 to 102mm) in length with a single pull

## TAB100

### Manual Industrial Tab Dispenser

- Designed to quickly and easily create tape tabs.
- Dispense tapes from .47" to .98" (12 to 25mm) in width
- Adjustable tape length: 2" to 8.27" (50 to 210mm)
- Sturdy metal construction

## TDLR050B

### Liner Remover and/or Tape Dispenser

- Excellent for foil tapes with an inside liner
- Will handle up to 2" (51mm) wide tapes
- Uses a 3" (76mm) core
- Heavy-duty metal base
- Functions as a single unit or along with our electric tape dispensers for maximum efficiency. Please call for details.

## TDLR050BG

### Large Liner Remover and/or Tape Dispenser

- Same features as the TDLR050B, but can accept up to 20" (508mm) diameter roll

MODEL #	Tape Width	Cut Length	Max. Outside Dia. of Roll	Core Diameter	Tape Cutter	Feed Type	115V AC Adapter	Dimensions	Weight
<b>zcM0300</b>	.25" to 1" (6 to 25mm)	.50 to 4.00" (13 to 102mm)	4.75" (120mm)	3" (76mm)	manual	hand lever	N/A	6.25"(L) x 3.5"(W) x 4.88"(H) 16cm(L) x 9cm(W) x 12cm(H)	3.2 lbs (1.45 kg)
<b>zcM0800</b>	.25" to 1" (6 to 25mm)	1.18, 1.77 & 3.54" (30, 45, 90mm)	5.3" (135mm)	1" & 3" (25 & 76mm)	manual	automatic	optional	6.97"(L) x 3.78"(W) x 4.53"(H) 177mm(L) x 96mm(W) x 115mm(H)	2.7 lbs (1.23 kg)
<b>zcM0900</b>	.25" to 1" (6 to 25mm)	30-95mm in 5mm intervals	5.3" (135mm)	1" & 3" (25 & 76mm)	manual	automatic	optional	6.97"(L) x 3.78"(W) x 4.53"(H) 177mm(L) x 96mm(W) x 115mm(H)	2.7 lbs (1.23 kg)
<b>TAB100</b>	.47 to .98" (12 to 25mm)	2" - 8.27" (50 to 210mm)	7.08" (180mm)	3" (76.2mm)	manual	hand lever	N/A	10.6"(L) x 4.3"(W) x 8.3"(H) 270mm(L) x 110mm(W) x 210mm(H)	8.8 lbs (4 kg)

D-sized batteries not included. Weight is shown without batteries.

MODEL #	Tape Width	Max. Roll Diameter	Type Gear Drive	Core Diameter	Dimensions	Weight
<b>TDLR050B</b>	Up to 2" (51mm)	6" (152mm)	gear	3" (76mm)	11.25"(L) x 3.50"(W) x 7.00"(H) ) 285mm(L) x 89mm(W) x 178mm(H)	6.50 lbs (2.94 kg)
<b>TDLR050BG</b>	Up to 2" (51mm)	20" (508mm)	gear	3" (76mm)	17.75"(L) x 5.75"(W) x 13.5"(H) ) 450mm(L) x 146mm(W) x 330mm(H)	18.5 lbs (8.41 kg)

**SL7605K****Manual Bag Sealer with Cutter**

- All metal construction
- Automatically measures and cuts tape
- Places a flag of tape around the bundled end of a bag

**SL7336****3" (76mm) Multi-Roll Manual Tape Dispenser**

- Ability to dispense three 1" (25mm) rolls of tape
- Tiered metal bars help guide and separate tape rolls
- Comes with 3" (76mm) cores

**SL7606****Stainless Steel Manual Bag Sealer with Cutter**

- Stainless steel construction
- Automatically measures and cuts tape
- Places a flag of tape around the bundled end of a bag

**SL7346****4" (102mm) Multi-Roll Manual Tape Dispenser**

- Ability to dispense four 1" (25mm) rolls of tape
- Tiered metal bars help guide and separate tape rolls
- Comes with 3" (76mm) cores

**SL7808K****Wide-Neck Manual Bag Sealer with Cutter**

- Designed for larger or thicker bags
- All metal construction
- Automatically measures and cuts tape
- Places a flag of tape around the bundled end of a bag

**SL9506****6" (152mm) Wide – Multi-Use Manual Tape and Label Dispenser**

- Dispense tape and labels
- 6" (152mm) wide dispenser
- Multi-roll capacity
- Heavy-duty steel frame

**SL9512****12" (305mm) Wide – Multi-Use Manual Tape and Label Dispenser**

- Dispense tape and labels
- 12" (305mm) wide dispenser
- Multi-roll capacity
- Heavy-duty steel frame

**SL7326****2" (51mm) Multi-Roll Manual Tape Dispenser**

- Ability to dispense two 1" (25mm) rolls of tape
- Tiered metal bars help guide and separate tape rolls
- Comes with 3" (76mm) cores

**SL9518****18" (457mm) Wide – Multi-Use Manual Tape and Label Dispenser**

- Dispense tape and labels
- 18" (457mm) wide dispenser
- Multi-roll capacity
- Heavy-duty steel frame

**TAPE Dispensers****Manual**

Additional info for **SLK7605K, SL7606 & SL7808K**

- Use any thin polyester or reinforced paper tapes
- Eliminate twist tying
- Heat-treated steel blade
- Bag trimmer
- Pre-drilled holes in base for mounting to work surfaces
- Compact design
- No assembly or maintenance required
- Comes with a 3" (76mm) core

Additional info for **SL7326, SL7336 & SL7346**

- Heavy-duty steel frame
- Non-skid weighted rubber base
- Serrated blade
- Baked enamel finish

Additional info for **SL9506, SL9512 & SL9518**

- Serrated cutting blade
- Works with die-cut and butt-cut labels
- Can use up to a 6" (152mm) diameter roll
- Dividers adjust to separate rolls
- Ability to change individual rolls
- Rubber suction base
- Baked enamel finish
- Use any size core

MODEL #	Max. Tape Width	Slot Opening	Max. Outside Diameter of Tape	Dimensions	Weight
SL7605K	.375" (9mm)	.375" (9mm)	6" (152mm)	8.622"(L) x 2.91"(W) x 6"(H) 219mm(L) x 74mm(W) x 152mm(H)	2.33 lbs (1.06 kg)
SL7606	.375" (9mm)	.375" (9mm)	6" (152mm)	8.622"(L) x 2.91"(W) x 6"(H) 219mm(L) x 74mm(W) x 152mm(H)	2.33 lbs (1.06 kg)
SL7808K	.79" (20mm)	.625" (16mm)	7" (178mm)	10"(L) x 3.34"(W) x 8.24"(H) 254mm(L) x 85mm(W) x 209mm(H)	3.75 lbs (1.70 kg)
MODEL #	Max. Roll Width	Max Outside Dia. of Roll	Dimensions		Weight
SL7326	2" (51mm)	6" (152mm)	9.375"(L) x 2.750"(W) x 5.250"(D) 238mm(L) x 69mm(W) x 133mm(D)		3.27 lbs (1.48 kg)
SL7336	3" (76mm)	6" (152mm)	9.375"(L) x 3.500"(W) D 5.250"(D) 238mm(L) x 89mm(W) x 133mm(D)		3.96 lbs (1.80 kg)
SL7346	4" (102mm)	6" (152mm)	9.375"(L) x 4.750"(W) x 5.250"(D) 238mm(L) x 121mm(W) x 133mm(D)		4.85 lbs (2.20 kg)
SL9506	6" (152mm)	6" (152mm)	12.315"(339mm)L x 8.750"(222mm)W x 7.000"(177mm)H		6.76 lbs (3.07 kg)
SL9512	12" (305mm)	6" (152mm)	12.315"(339mm)L x 14.625"(371mm)W x 7.000"(177mm)H		9.45 lbs (4.29 kg)
SL9518	18" (457mm)	6" (152mm)	12.315"(339mm)L x 20.750"(527mm)W x 7.000"(177mm)H		10.76 lbs (4.88 kg)

Manual Gummed

Additional info for **TDH201**

- Easy to use
- Simple length setting
- Reduces tape costs by eliminating waste
- Triple moistening brush system with a corrosion resistant water tray
- Large capacity water bottle (46oz., 1.3l) for long intervals between fill-ups
- Easy to refill water bottle
- Adjustable water level
- Stainless steel tape guides
- Heavy-duty metal frame for strength and durability
- Uses plain or reinforced tapes

**Suggested accessory:**

TDH201PHEATER  
Adjustable top heater ensures superior tape adhesion, constant brush/water temperature, and maximum wetting and activation of adhesive (useful in cold climates).



TDH<sub>2</sub>O1

Manual Gummed  
"Water-Activated"  
Tape Dispenser

- Feeds, moistens, and cuts definite length gummed tapes
- Ideal for use in small to medium size shipping departments
- Dispense tape from 1.5" to 3" (38 to 76mm) in width
- Dispense tape from 6 to 39" (152 to 990mm) in length with one stroke



IDEAL FOR ANY SHIPPING DEPARTMENT



EASY LENGTH ADJUSTMENT

MODEL #	Tape Width	Max. Roll Size	Water Bottle Capacity	Number of Wetting Brushes	Machine Dimensions	Shipping Dimensions	Machine Weight	Shipping Weight
TDH <sub>2</sub> O1	1.5-3" (38-76mm)	up to 600' (182mm) roll 8" (203mm) OD	46 oz. (1.3l)	3	18"(L)x9.5"(W)x13"(H) 457mm(L)x242mm(W)x330mm(H)	21"(L)x13"(W)x16"(H) 534mm(L)x330mm(W)x407mm(H)	23 lbs (10.43 kg)	27 lbs (12.25 kg)



# must for every packaging dept!

Secure Packages Better.

**TAPE** Dispensers



## Electric Gummed

Additional info for **TDH205**

- Increases operator efficiency
- Easy to use
- Reduces tape costs by eliminating waste
- Easy touch membrane switch electronic key pad for length settings
- 2X button to double any preset length button
- Random Length button that feeds as long as the button is pressed
- Quiet long-life drive motor only operates when length button is pressed
- Triple moistening brush system with a corrosion resistant water tray
- Large capacity water bottle (46oz., 1.3l) for long intervals between fill-ups
- Easy to refill water bottle
- Adjustable water level
- Adjustable top heater ensures superior tape adhesion, constant brush/water temperature and maximum wetting and activation of adhesive (useful in cold climates)
- Stainless steel tape guides
- Heavy-duty metal frame for strength and durability
- Uses plain or reinforced tapes



### TDH205

#### Electric Gummed "Water-Activated" Tape Dispenser

- Feeds, moistens, and cuts definite length gummed tapes
- Ideal for use in any shipping department
- Dispense tape from 1.5" to 3" (38 to 76mm) in width
- 14 preset length buttons for easy dispensing



EASY TOUCH MEMBRANE SWITCH



ADJUSTABLE HEATING ELEMENT

MODEL #	Tape Width	Maximum Roll Size	Water Bottle Capacity	Number of Wetting Brushes	Machine Dimensions	Shipping Dimensions	Dispensing Speed	Machine Weight	Shipping Weight
TDH205	1.5-3" (38-76mm)	up to 600' (182mm) roll 8" (203mm) OD	46 oz. (1.3l)	3	18"(L)x11.5"(W)x11"(H) 457mm(L)x292mm(W)x280mm(H)	21"(L)x13"(W)x16"(H) 534mm(L)x330mm(W)x407mm(H)	up to 45" per sec. (1143mm)	29 lbs (12.16 kg)	34 lbs (15.4 kg)

Power Requirements: 100/115V 50/60Hz 5 amps

# LABEL Dispensers



## USABILITY

- • • • Peel and advance labels automatically, without hassle of peeling by hand.



## PRECISION

- • • • Maintain precise control over the flow of material for proper peeling. Photosensor allows for accurate detection of labels.



## EFFICIENCY

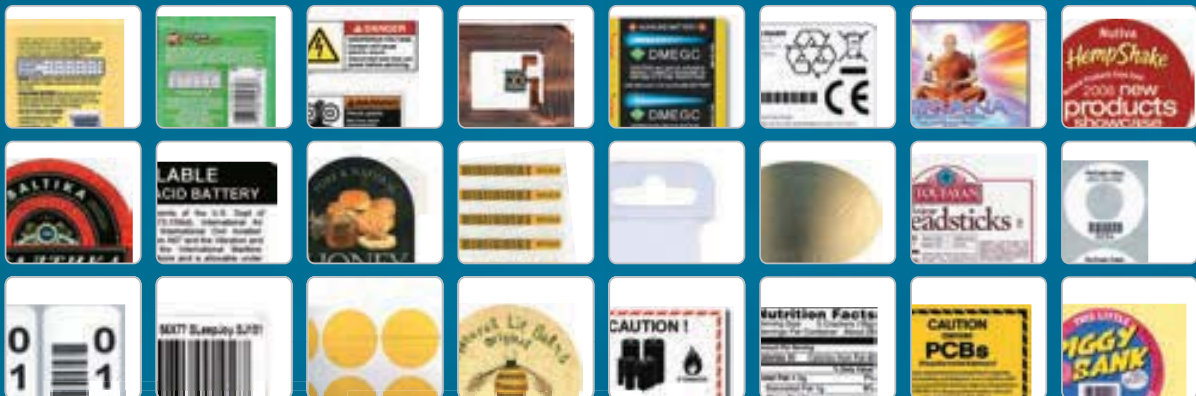
- • • • Increase productivity by reducing hand and arm motions.



## VERSATILITY

- • • • Dispense virtually any size, shape, and material of label, even die-cut parts.

## PROVEN MATERIALS FOR OUR LABEL DISPENSERS



Chris D.  
and Claudia M.

Look for the START  
holographic seal to ensure  
product authenticity!



# Increase Productivity & Maintain Label Integrity

## LABEL Dispensers

### Electric

#### LD2000V

#### 2.25" (57mm) wide — Electric Label Dispenser "HIGH SPEED"

- Ideal for small labels and small work areas
- Automatically peels labels from the liner and advances labels
- Will dispense labels and die-cut parts
- Photosensor accuracy and reliability
- All metal construction
- Will dispense labels from .25" to 2.25" (6 to 57mm) in width
- Will dispense labels from .25" to 3" (6 to 76mm) in length
- Works with most clear material
- Made in U.S.A.



#### Additional Info for LD2000V

- Will accommodate core sizes of 1" (25mm) and 3" (76mm)
- Automatically rewinds liner scrap for a cleaner working environment
- Liner scrap is easily removed
- No tools required for adjusting to different size labels
- No maintenance required
- The LD2000 can be daisy-chained to other LD2000s for dispensing different labels at the same time. This enables up to 8 dispensers to operate as a single dispenser. Order part no. LD2000-CABLE for each connection.
- All 230V machines are **CE** Certified

#### COMMON MATERIALS



**Suggested accessory:**  
LDPBATTERY  
Rechargeable External  
Battery Pack

See Accessories Page 31

MODEL #	Liner Capacity Width	Length	Roll Capacity	Feed Speed*	Dimensions	Electrical Requirements	Weight
LD2000V	.25" to 2.25" (6mm to 57mm)	.25" to 3" (6mm to 76mm)	6" (15.2cm)	2.2"/sec* (5.6cm/sec.)	7.3" (L) x 4.9" (W) x 9.6" (H) 8.5cm (L) x 12.5cm (W) x 24.1cm (H)	12V Dc with Universal transformer, 100V <b>CE</b> - 240V	2.00 lbs (.91 kg)

\*speed calculated at 60Hz



## Electric

### Additional info for LD6050

- Will dispense labels and die-cut parts
- Adjustable strip plate for hard-to-release labels
- Will accommodate core sizes of 1" (25 mm) and 3" (76mm)
- Automatically rewinds liner scrap for a cleaner working environment
- Liner scrap is easily removed
- No tools required for adjusting to different size labels
- No maintenance required
- For Clear labels please select Model # LD5100C

### Additional info for LD6025

- Will dispense labels and die-cut parts
- Adjustable strip plate for hard-to-release labels
- Will accommodate core sizes of 1" (25 mm) and 3" (76mm)
- Can dispense paper, polyester, vinyl, acetate, foam, foil, etc.
- Automatically rewinds liner scrap for a cleaner working environment
- Liner scrap is easily removed
- No tools required for adjusting to different size labels
- No maintenance required
- All 230V machines are CE Certified

### SPECIAL APPLICATIONS

- For Clear labels please select Model # LD6050C or LD6025C

### Suggested accessory:

LDHANGER16  
16" (40.6cm) wide

See Accessories Pg. 31



For 230V machines,  
please add "-2" to the  
end of the model number.  
(Example: LD6050-2)

## LD6050

### 4.5" (114mm) wide — Electric Label Dispenser "HIGH SPEED"

- Ideal for virtually any kind of label from bar code to packaging
- Automatically peels and advances labels
- New built-in hanging capability for use with workbenches and LDHANGER16
- Photosensor accuracy and reliability
- All metal construction
- High torque motor for heavy rolls of labels
- Will dispense labels from .25" to 4.5" (6 to 114mm) in width
- Will dispense labels from .50" to 6" (13 to 152mm) in length
- Made in U.S.A.



HANGING BRACKET

### COMMON MATERIALS



## LD6025

### 4.5" (114mm) wide — Electric Label Dispenser

- Ideal for short length and tiny bar code labels
- Automatically peels and advances labels
- New built-in hanging capability for use with workbenches and LDHANGER16
- Photosensor accuracy and reliability
- All metal construction
- High torque motor for heavy rolls of labels
- Will dispense labels from .25" to 4.5" (6 to 114mm) in width
- Will dispense labels from .125" to 6" (3 to 152mm) in length
- Made in U.S.A.



HANGING BRACKET

### COMMON MATERIALS



MODEL #	Liner Capacity Width	Length	Roll Capacity	Feed Speed**	Dimensions	Electrical Requirements	Weight
LD6050	.25" to 4.5" (6mm to 114mm)	.50" to 6" (13mm to 152mm)	12" (31cm)	3.3"/sec** (8cm/sec.)	10.8"(L) x 10.8"(W) x 14.5"(H) 27.4cm(L) x 27.4cm(W) x 36.8cm(H)	100/120V 50/60Hz, <1 amp (230V 50/60Hz CE available)	10.5 lbs (4.76 kg)
LD6025	.25" to 4.5" (6mm to 114mm)	.125" to 6" (3mm to 152mm)	12" (31cm)	1.6"/sec** (3.9cm/sec.)	10.8"(L) x 13.2"(W) x 14.5"(H) 27.4cm(L) x 33.5cm(W) x 36.8cm(H)	100/120V 50/60Hz, <1 amp (230V 50/60Hz CE available)	7.8 bs (3.5 kg)

\*LD6100 model specifications are the same as the above models, but the Feed Speed is 6.6"/Sec.

\*\*speed calculated at 60Hz



## Electric

### LDX6050

#### 7" (178mm) wide — Electric Label Dispenser "HIGH SPEED"

- Ideal for wider packaging type labels
- Automatically peels and advances labels
- New built-in hanging capability for use with workbenches and LDHANGER16
- Photosensor accuracy and reliability
- All metal construction
- High torque motor for heavy rolls of labels
- Will dispense labels from .25" to 7" (6 to 178mm) in width
- Will dispense labels from .50" to 6" (13 to 152mm) in length
- Made in U.S.A.



#### COMMON MATERIALS



HANGING BRACKET

### LDX6025

#### 7" (178mm) wide — Electric Label Dispenser "HIGH SPEED"

- Ideal for wide, short length labels
- Automatically peels and advances labels
- New built-in hanging capability for use with workbenches and LDHANGER16
- Photosensor accuracy and reliability
- All metal construction
- High torque motor for heavy rolls of labels
- Will dispense labels from .25" to 7" (6 to 178mm) in width
- Will dispense labels from .125" to 6" (3 to 152mm) in length
- Made in U.S.A.



#### COMMON MATERIALS



HANGING BRACKET

#### Additional info for LDX6025 & LDX6050

- Will dispense labels and die-cut parts
- Adjustable strip plate for hard-to-release labels
- Will accommodate core sizes of 1" (25mm) and 3" (76mm)
- Capable of dispensing labels made of paper, polyester, vinyl, acetate and foil
- Automatically rewinds liner scrap for a cleaner working environment
- Liner scrap is easily removed
- No tools required for adjusting to different size label
- No maintenance required
- All 230V machines are CE Certified

#### SPECIAL APPLICATIONS

- For clear labels please select Model # LDX6025C or LDX6050C

For 230V machines, please add "-2" to the end of the model number.  
(Example: LDX6025-2)

MODEL #	Liner Capacity Width	Length	Roll Capacity	Feed Speed**	Dimensions	Electrical Requirements	Weight
LDX6050	.25" to 7" (6mm to 178mm)	.50" to 6" (13mm to 152mm)	12" (31cm)	3.3"/sec** (8cm/sec.)	10.8"(L) x 13.2"(W) x 14.5"(H) 27.4cm(L) x 33.5cm(W) x 36.8cm(H)	100/120V 50/60Hz, <1 amp (230V 50/60Hz CE available)	11.3 lbs (5.12 kg)
LDX6025	.25" to 7" (6mm to 178mm)	.125" to 6" (3mm to 152mm)	12" (305mm)	1.6"/sec** (3.9cm/sec.)	14.5"(L) x 15.5"(W) x 11.0"(H) 368mm(L) x 394mm(W) x 279mm(H)	100/120V 50/60Hz, <1 amp (230V 50/60Hz CE available)	11.3 lbs (5.2 kg)

\*LD6100 model specifications are the same as the above models, but the Feed Speed is 6.6"/Sec.

\*\*speed calculated at 60Hz

## Electric

### Additional info for LD5500 & LD7500

- Will dispense labels and die-cut parts
- Adjustable strip plate for hard-to-release labels
- Will accommodate core sizes of 1" (25mm) and 3" (76mm)
- Capable of dispensing labels made of paper, polyester, vinyl, acetate and foil
- Automatically rewinds liner scrap for a cleaner working environment
- Liner scrap is easily removed
- No tools required for adjusting to different size label
- No maintenance required
- All 230V machines are CE Certified

### SPECIAL APPLICATIONS

- For clear labels please select Model # LD5500C or LD7500C

For 230V machines, please add "-2" to the end of the model number.  
(Example: LD5500-2)

## LD5500

### 5" (127 mm) wide — Electric Label Dispenser "HIGH SPEED"

- Ideal for long packaging type labels
- Automatically peels and advances labels
- Photosensor accuracy and reliability
- All metal construction
- High torque motor for heavy rolls of labels
- Will dispense labels from .25" to 5" (6 to 127mm) in width
- Will dispense labels from .5" to 12" (13 to 305mm) in length
- LD5500SS dispense labels up to 7.8"/sec\*
- Made in U.S.A.



#### COMMON MATERIALS



## LD7500

### 8" (203mm) wide — Electric Label Dispenser "HIGH SPEED"

- Ideal for long and wide packaging type labels
- Automatically peels and advances labels
- Photosensor accuracy and reliability
- All metal construction
- High torque motor for heavy rolls of labels
- Will dispense labels from .25" to 8" (6 to 203mm) in width
- Will dispense labels from .5" to 12" (13 to 305mm) in length
- LD7500SS dispense labels up to 7.8"/sec\*
- Made in U.S.A.



#### COMMON MATERIALS



MODEL #	Liner Capacity Width	Length	Roll Capacity	Feed Speed**	Dimensions	Electrical Requirements	Weight
LD5500	.25" to 5" (6 to 127mm)	.5" to 12" (13 to 305mm)	12" (305mm)	3.9"/sec** (10cm/sec.)	14.5"(L) x 12.5"(W) x 11.0"(H) 368(L) x 318(W) x 279mm(H)	100/120V 50/60Hz, <1 amp (230V 50/60Hz CE available)	19.2 lbs (8.7 kg)
LD7500	.25" to 8" (6 to 203mm)	.5" to 12" (13 to 305mm)	12" (305mm)	3.9"/sec** (10cm/sec.)	14.5"(L) x 15.5"(W) x 11.0"(H) 368(L) x 394(W) x 279mm(H)	100/120V 50/60Hz, <1 amp (230V 50/60Hz CE available)	21.1 lbs (10 kg)

\*SS model specifications are the same as the regular counterparts, but the Feed Speed is 7.8"/Sec.

\*\*speed calculated at 60Hz

## Bottle Labelers

Additional info for **LAB01**

- Heavy-duty metal construction
- No tools required for adjusting to different size labels
- No regular maintenance required
- Applies labels on bottles up to 6.5" in diameter



The LAB01 features START International's brand new, patent pending, cyli-SIZE™ technology. Easily label different sized cylindrical products, from .5" (12.70mm) to 6.5" (165mm) in one easy step. [ChapStick® size to 1 gallon]



### LAB01

#### Manual Bottle Label Applicator

- Quickly applies labels to bottles, cans, jars and other cylindrical products.
- Ideal for short runs
- Accurately places labels in same location for consistent look
- Easily adjustable for different sized cylindrical products from .5" (12.70mm) to 6.5" (165mm) in diameter [ChapStick® size to 1 gallon]
- Made in USA

### LAB01-BW ACCESSORY

#### LAB01 Accessory for Light-Weight Bottles and Containers

- Applies appropriate pressure to light bottles & containers to ensure proper label application.
- Designed for use with the LAB01 Bottle Labeler
- **Accessory Only. LAB01 Bottle Label Applicator not included**



For 230V machines, please add "-2" to the end of the model number. (Example: LD5500-2)

MODEL #	Bottle Size (Dia.)	Label Size	Label Width	Unit Dimensions	Weight
LAB01	.5" to 6.5" (12.70mm to 165mm)	.5" to 12" (12mm to 304mm)	1" to 6.5" (25mm to 165mm)	22.5" x 11.5" x 13.5" (572mm x 292mm x 343mm)	13.1 lbs (6kg)



# LABEL Dispensers

## Specialty & Hand-Held

Additional info for **LAP65-30,**

**LAP65-60, LAP65-100**

- Ideal for repetitive labeling of boxes or bags
- Simply squeeze handle to dispense and apply any die-cut label
- Maximum outside diameter of roll 3.93" (100mm)
- No custom tooled slots needed to dispense labels, just a 1/8" (3mm) gap between labels
- Manufactured for industrial use
- Unique sensor automatically adjusts the label stroke
- Patented mechanism dispenses virtually any shape of die-cut label

Additional info for **LDHANGTAB**

- Will dispense labels and die-cut parts
- Adjustable strip plate for hard-to-release hang tabs
- Will accommodate core sizes from 1" to 6" (25 to 152mm)
- Automatically rewinds liner scrap for a cleaner working environment
- Liner scrap is easily removed
- No tools required for adjusting to different size hang-tabs
- No maintenance required
- Will dispense clear or opaque hang-tabs

**For 230V machines, please add "-2" to the end of the model number. (Example: LDHANGTAB-2)**

### LR4500

#### Label Rewinder

- Rewind labels from thermal transfer printers or reels
- 2 speeds (slow and fast)
- Bi-directional (forward and backward)
- Maximum material width 4.5" (114mm)
- Maximum outside diameter of roll 9" (251mm)
- Use 2 LR4500's to unwind and rewind labels for proper orientation of labels



\*SHOWN WITH  
A BRADY IP  
PRINTER SYSTEM



### LAP65-30

#### Manual Hand-Held Label Applicator

- Maximum label width 1.20" (30mm)
- Maximum label length 2.36" (60mm)
- Minimum core size 1" (25mm)



### LAP65-60

#### Manual Hand-Held Label Applicator

- Maximum label width 2.36" (60mm)
- Maximum label length 2.36" (60mm)
- Minimum core size 1" (25mm)



### LAP65-100

#### Manual Hand-Held Label Applicator

- Maximum label width 3.93" (100mm)
- Maximum label length 2.36" (60mm)
- Minimum core size 1" (25mm)

### LDHANGTAB

#### Electric Hang-Tab Dispenser

- Automatically peels and advances labels
- Photosensor accuracy and reliability
- All metal construction
- High torque motor for heavy rolls of labels
- Will dispense hang-tabs from .25" to 4.5" (6 to 114mm) wide
- Will dispense hang-tabs from .125" to 6" (3 to 152mm) in length



MODEL #	Liner Capacity Width	Length	Roll Capacity	Feed Speed*	Core	Dimensions	Electrical Requirements	Weight
LR4500	.25" to 4.5" (6mm to 114mm)	Variable	9" (251mm)	Slow/Fast	1.25" & 3"	11" (L) x 6" (W) x 9.2" (H) 27.9cm (L) x 15.2cm (W) x 23.4cm (H)	12V Dc with Universal transformer, 100V - 240V	8.5 lbs (3.6 kg)

\*speed calculated at 60 Hz

MODEL #	Max. Outside Dia. of Roll	Minimum Core Size	Liner Maximum Width	Liner Minimum Width	Maximum Label Length	Minimum Label Length	Weight
LAP65-30	3.93" (100mm)	1" (25mm)	1.20" (30mm)	.75" (19mm)	2.36" (60mm)	.78" (20mm)	11.2 oz (318 g)
LAP65-60	3.93" (100mm)	1" (25mm)	2.36" (60mm)	1" (25mm)	2.36" (60mm)	.78" (20mm)	13.1 oz. (372 g)
LAP65-100	3.93" (100mm)	1" (25mm)	3.96" (100mm)	2.15" (55mm)	2.36" (60mm)	.78" (20mm)	15.0 oz (425 g)

MODEL #	Liner Capacity Width	Length	Roll Capacity	Feed Speed*	Core	Dimensions	Electrical Requirements	Weight
LDHANGTAB	.25" to 4.5" (6mm to 114mm)	.125" to 6" (3mm to 152mm)	16" (408mm)	3.3"/sec* (8cm/sec)	6" (153mm)	10.8"(L) x 10.8"(W) x 14.5"(H) 27.4cm(L) x 27.4cm(W) x 36.8cm(H)	100/120V 50/60Hz, <1 amp (230V 50/60Hz <b>CE</b> available) (4.76 kg)	9.5 lbs (4.3 kg)

\*speed calculated at 60 Hz



# If It's On A Liner, We Can Dispense It.

Dispense Virtually Any Size, Shape  
or Material of Die-Cut Parts

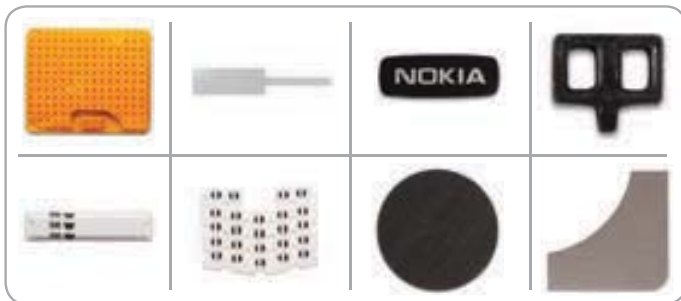


## DC5100

### 4.5" (114mm) Wide – Electric Die-Cut Part Dispenser "High Speed"

- Ideal for virtually any shape, size, and material die-cut part
- Automatically peels and advances die-cut parts
- Photosensor accuracy and reliability
- All metal construction
- High torque motor for large diameter die-cut rolls
- Will dispense die-cut parts from .25" to 4.5" (6 to 114mm) in width
- Will dispense die-cut parts from .50" to 6" (13 to 152mm) in length

COMING  
SOON  
2013



## LABEL Dispensers

### Die-Cut Part

#### Additional info for DC5100

- Adjustable strip plate for hard-to-release die-cut parts
- Accommodates core sizes of 1" (25mm) and 3" (76mm), other sizes optional
- Capable of dispensing paper, polyester, vinyl, acetate, foil, foam, etc.
- Automatically rewinds liner scrap for a cleaner working environment
- Liner scrap is easily removed
- No tools required for adjusting to different size die-cut parts
- No maintenance required
- For Clear die-cuts please select Model # DC5100C
- All 230V machines are CE Certified

For 230V machines,  
please add "-2" to the  
end of the model number.  
(Example: DC5100-2)



Pablo D.

MODEL #	Liner Width	Length	Roll Capacity	Feed Speed	Dimensions	Electrical Requirements	Weight
DC5100	.25 to 4.5" (6 to 114mm)	.50 to 6" (13 to 152mm)	12" (31cm)	3.3"/sec * (8cm/sec)	10.8" (L) x 10.8" (W) x 14.5" (H) 27.4cm (L) x 27.4cm (W) x 36.8cm (H)	100/120V 50/60Hz, <1 amp (230V 50/60Hz CE available)	11 lbs (4.95 kg)

\*speed calculated at 60Hz

# NON-ADHESIVE Cutters



## VERSATILITY

- • • • Heavy-duty and light-duty machines cut a wide variety of non-adhesive materials



## EFFICIENCY

- • • • High-speed operation can cut up to 140 pieces per minute on some machines



## PRECISION

- • • • Accurately cut each piece to a preprogrammed length

## Proven Materials for Non-Adhesive Cutters



Maria B.  
and Leman W.

Look for the START  
holographic seal to ensure  
product authenticity!



# Automatic and User Friendly

**NON-ADHESIVE**  
Cutters

**Heavy-Duty**



**TBC50**

**COLD CUT**

## Heavy-Duty Non-Adhesive Material Cutter

- Automatically dispenses, measures and cuts non-adhesive materials
- Ideal for heavy production to cut tubing, sleeving, Nomex®, Velcro®, ribbon, etc.
- Cut up to 4.3" (110 mm) wide material or multiple rolls
- High speed operation cuts up to 140 pieces per minute at 2" (50 mm) in length

**TBC50H**

**HOT CUT**

## Heavy-Duty Non-Adhesive Material HOT Cutter

- Automatically dispenses, measures and cuts non-adhesive materials prone to fraying with a heat seal
- Ideal for heavy production to cut ribbon material, belting, webbing, sleeving, strapping, rope, etc.
- Cuts up to 3.54" (90mm) wide material or multiple rolls
- High speed operation cuts up to 140 pieces per minute at 2" (50mm) in length



**TBCFEEDER**

## Material Feeder for the TBC50 Series Non-Adhesive Cutters

- For use with the TBC50 cutter series to reduce drag and slippage of material while advancing it
- All electric, high speed and auto adjusting for slack in material
- Feeds materials up to 4.33" (110mm) wide
- Automatic shut off stops automatically if material runs out during operation
- No tooling required to feed different materials



### Additional info for TBC50

- Easily programmed and operated - set length, quantity and feed speed; then press start
- Automatic shut-off feature stops power if material runs out during operation
- Adjustable pressure on feed roller for thin or smooth materials
- Stepper motor ensures accuracy
- HSS (high speed steel) cutting blade
- Safety guard protects operator from cutting mechanism
- No tooling required to cut different materials
- All 230V machines are **CE** Certified

### Additional info for TBC50H

- Adjustable temperature control
- Easily programmed and operated - set length, quantity and feed speed; then press start
- Automatic shut-off feature stops power if material runs out during operation
- Adjustable pressure on feed roller for thin or smooth materials
- Stepper motor ensures accuracy
- HSS (high speed steel) cutting blade
- Safety guard protects operator from cutting mechanism
- No tooling required to cut different materials
- All 230V machines are **CE** Certified

For 230V machines, please add "-2" to the end of the model number. (Example: TBC50-2)

MODEL #	Max. Width	Cut Length	Max. Material Thickness*	Feed Speed	Accuracy*	Max. Outside Dia. of Roll	Length and Count Settings	Feed and Cut	Dimensions	Weight
TBC50	4.3" (110mm)	.04 to 394" (1 to 9999mm)	0.25" (6mm)	105' (32m) / min. 21" (53cm) / sec.	±0.04" (1mm)	18" (487mm)	digital	automatic	16.5" (L) x 12.6" (W) x 18.9" (H) 420mm(L) x 320mm(W) x 480mm(H)	39 lbs (17.5 kg)
TBC50H	3.54" (90mm)	.60 to 394" (15 to 9999mm)	0.25" (6mm)	105' (32m) / min. 21" (53cm) / sec.	±0.04" (1mm)	18" (487mm)	digital	automatic	32.3" (L) x 14.6" (W) x 15" (H) 820mm(L) x 370mm(W) x 380mm(H)	47 lbs (21.3 kg)
TBCFEEDER	4.3" (110mm)	N/A	N/A	adjustable	N/A	18" (487mm)	N/A	N/A	30" (L) x 13.4" (W) x 8.7" (H) 740mm(L) x 340mm(W) x 220mm(H)	16 lbs (7.3 kg)

Electrical requirements: TBC50/TBC50H: 110V 50/60Hz (230V 50/60Hz **CE** available), TBCFEEDER: 115 or 230V 50/60Hz **CE**, <2amps Switchable \*dependent on material being cut

# NON-ADHESIVE Cutters

## Heavy-Duty

Additional info for **Heavy-Duty** cutters

- Automatic shut-off feature stops power if material runs out during operation
- Easily programmed and operated - set length, quantity and feed speed; then press start
- Adjustable pressure on feed roller for thin or smooth materials
- Stepper motor ensures accuracy
- HSS (high speed steel) cutting blade
- Safety guard protects operator from cutting mechanism
- No tooling required to cut different materials
- All 230V machines are **CE** Certified



**HOT CUT**

Hot Cut machines are ideal for materials that fray when cut

**Suggested accessory:**  
TBCFEEDER  
See Pg. 25



For 230V machines, please add "-2" to the end of the model number.  
(Example: TBC50-SH-2)



**TBC50S**

**COLD CUT**

### Material Cutter with Photosensor Accuracy

- Cuts up to 4.33" (100mm) wide material or multiple rolls
- Cuts up to 140 pieces per minute at 2" (50mm) in length



**TBC50SH**

**HOT CUT**

### Material Cutter with Photosensor and Hot Knife

- Cuts up to 4.33" (100mm) wide material or multiple rolls
- Cuts up to 140 pieces per minute at 2" (50mm) in length



**TBC52RT**

**COLD CUT**

### Material Cutter for Round & Straight Cutting

- Cuts up to 2.17" (55mm) wide material or multiple rolls
- Cuts up to 90 pieces per minute at 2" (50mm) in length

**TBC52R**

**COLD CUT**

### Large Material Cutter for Round & Straight Cutting

- Cuts up to 2.17" (55mm) wide material or multiple rolls
- Cuts up to 90 pieces per minute at 2" (50mm) in length



For details and technical specifications on these **HEAVY-DUTY** Material Cutters visit [www.STARTinternational.com](http://www.STARTinternational.com)



**TBC50HX**

**HOT CUT**

### Material ANGLED Cutter with HOT Knife

- Cuts up to 4.33" (100mm) wide material or multiple rolls
- Cuts up to 140 pieces per minute at 2" (50mm) in length



**TBC55SK**

**COLD CUT**

### Label Cutter with Stacker

- Cuts up to 3.15" (80mm) wide material or multiple rolls
- Cuts up to 140 pieces per minute at 2" (50mm) long



**TBC50LH & TBC50LH/AIR**

### Wide Material Cutters TBC50LH (Electric) TBC50LH/AIR (Pneumatic)

**HOT CUT**

- Cuts up to 7.87" (200mm) wide material or multiple rolls
- Cuts up to 26 pieces per minute at 39.3" (1 meter) long



**TBC553L & TBC552L**

### Extra Large Cutter

**COLD CUT**

- Cuts up to 8.25" (210mm) wide material or multiple rolls
- Cut up to 105 ft (32m) per min., 21" (43cm) per sec





## zcM1500W

### Electronic Light-Duty Non-Adhesive Cutter

- Ideal for low production of repetitive cutting of non-adhesive materials such as heat-shrink tubing
- Program a defined length and automatically advance and cut material
- Accepts widths up to 2" (51mm)
- Cuts tape lengths from .79" to 39" (20 to 999mm)
- Made in Japan

## zcM2500

### Electronic Light-Duty Non-Adhesive Cutter with Safety Guard Cutter

- Ideal for low production of repetitive cutting of non-adhesive materials such as heat-shrink tubing
- Program a defined length and automatically advance and cut material
- Accepts widths up to 2" (51mm)
- Cuts tape lengths from .79" to 39" (20 to 999mm)
- Made in Japan



Additional info for

**zcM1500W & zcM2500**

- Photocell actuated feed & cut or push-button feed & cut
- Guillotined cut for a straight cuts
- LED Digital length adjustment
- Manual override of preset lengths
- Blades good for up to 200,000 cuts (dependent on type of material)
- Steel frame for durability
- Cabinet made from flame retardant antistatic composite (auto ignition of 896° F/ 480°C)
- Comes with a 3-in-1 core (1" (25mm), 1.4" (35mm), 3" (76mm))
- Accuracy of cut length is +/- .04" (1mm) (dependent on type of material)
- Many available accessories fit this machine. See Accessories section.
- All 230V machines are CE Certified

For 230V machines,  
please add "-2" to the  
end of the model number.  
(Example: zcM1500W-2)

MODEL #	Max. Width Cut*	Length Cut	Max. Outside Dia. of Roll	3-in-1 Core Holder	Display	Accuracy of Cut	Cutter	Safety Guard	Auto Feed	Weight	Dimensions
zcM1500W	up to 2" (51mm)	.79 to 39" (20 to 999mm)	7" (178mm)	1", 1.4", 3" (25, 35, 76mm)	3 digit (LED)	±0.04" (1mm)	automatic	N/A	yes	5.5 lbs (2.49 kg)	5.4"(L) x 9.7"(W) x 5.9"(H) 137mm(L) x 245mm(W) x 150mm(H)
zcM2500	up to 2" (51mm)	1.18 to 39" (30 to 999mm)	7" (178mm)	1", 1.4", 3" (25, 35, 76mm)	3 digit (LED)	±0.04" (1mm)	automatic	yes	yes	5.9 lbs (2.68 kg)	5.4"(L) x 9.8"(W) x 6.2"(H) 137mm(L) x 249mm(W) x 156mm(H)

Electrical requirements: 117V 50/60Hz, <1 amp (230V 50/60Hz CE available)

\*dependent on the thickness and hardness of the material to be cut

Let START test your material on our machines to ensure compatibility

# Let START Fit Your Application

As a guide, we have paired some of the most common tapes on the market along with the most popular Tape Dispensers in our product line. As there are different thicknesses, different widths, different adhesives, different brands and different required cut lengths, all materials may not

perform the same. If you are not sure if your material will work properly with our machines please call and ask one of our Material Dispensing Specialist (MDS) or please visit page 32 for our **Material Evaluation Form**. We will gladly test your material for compatibility.

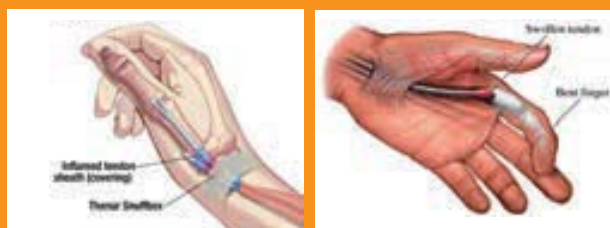
## TAPE COMPATIBILITY CHART FOR START DISPENSERS

TAPE MATERIAL	zcM0300	zcM0800	zcM1000	zcM1100	TDA025	TDA080	TDA080-NS	TDA080-NM	TDA150	TDA150-NS	TDA150-NM
Duct / Cloth						●	●		●	●	
Filament Reinforced			●	●	●	●	●		●	●	
Foam & VHB							●			●	
Foil			●	●	●	●		●	●		●
Glass Cloth			●	●	●	●	●		●	●	
Kapton® / Polyimide	●	●	● <sub>1</sub>	● <sub>1</sub>	●						
Mylar® / Polyester	●	●	●	●	●	● <sub>2</sub>	● <sub>2</sub>		● <sub>2</sub>	● <sub>2</sub>	
Paper / Masking	●	●	●	●	●	●	●		●	●	
PET		●	●	●	●	●	●		●	●	
Polyethylene / Acrylic								● <sub>3</sub>			● <sub>3</sub>
Polypropylene	●	●	●	●	●	● <sub>4</sub>					
Teflon® / PTFE	● <sub>5</sub>	● <sub>5</sub>	●	●	●	●	●		●	●	
Rubber / Silicone			● <sub>6</sub>	● <sub>6</sub>		● <sub>6</sub>	● <sub>6</sub>		● <sub>6</sub>	● <sub>6</sub>	
Tensitized Polypropylene			●	●	●	●	●		●	●	
Vinyl			●	●	●	●	●		●	●	

Footnotes:  
 1. These machines may work on the standard dispensers yet our "K" modification is suggested when using Kapton®. 2. Thicker Polyester materials work better on these dispensers. 3. These dispensers were recommended specifically for surface protection tapes. If you are not using surface protection tapes your options for dispensers are larger. 4. This dispenser is ok to use with lengths less than 3". If you are using longer lengths it is suggested to use an ionizer in front of the machine due to the amount of static this type of tape generates. 5. Glass fiber reinforced and high unwind tapes are not recommended for these dispensers. Only thin films. 6. The Mylar® liner needs to remain on the material when dispensing and we suggest using our material guide accessory.

## START Reducing Injuries

Using START's semi-automatic tape and label dispensers reduces exposure to conditions such as de Quervain's disease and Trigger Finger. Both of these conditions result in painful inflammation of tendons of the hands and fingers. Protect your employees and their health, and protect yourself from costly worker's compensation claims.



Two of the most common injury areas for end users

## ELECTRONIC TAPE DISPENSER – QUICK REFERENCE CHART

MODEL #	Tape Width	Cut Length	Memory	Max. Outside Diam. Of Roll	Machine Dimensions	Tape Cutter	Weight	Page #
TDA025B	.12 - .98" (3 - 25mm)	.47 - 2.36" (12 - 60mm)	1	5.1" (130mm)	12.5Lx7.25Wx7.0"H (317 x 191 x 178mm)	Automatic	6.2 lbs (2.8kg)	10
TDA080	.25 - 3.15" (6 - 80mm)	1.6 - 394" (40 - 9999mm)	1	9" (251mm)	10.25Lx6.5Wx14.25H (260 x 165 x 362mm)	Automatic	23.5 lbs (10.6kg)	7
TDA150	.25 - 5.9" (6 - 150mm)	1.6 - 394" (40 - 9999mm)	1	9" (251mm)	11Lx13Wx14H (279 x 330 x 356mm)	Automatic	36.1 lbs (16.3kg)	9
zcM1000	.28 - 2" (7 - 51mm)	.79 - 39" (20 - 999mm)	1	7" (178mm)	8.75Lx5.25Wx6.5H (222 x 133 x 165mm)	Automatic	5.8 lbs (2.6kg)	3
zcM1100	.28 - 2" (7 - 51mm)	1.2 - 39" (30 - 999mm)	1	7" (178mm)	8.75Lx5.25Wx6.5H (222 x 133 x 165mm)	Automatic	6.0 lbs (2.7kg)	6
zcM2000	.28 - 2" (7 - 51mm)	.79 - 39" (20 - 999mm)	3	7" (178mm)	8.75Lx5.25Wx6.5H (222 x 133 x 165mm)	Automatic	5.8 lbs (2.6kg)	5
zcM2000X	.28 - 2" (7 - 51mm)	.79 - 39" (20 - 999mm)	10	7" (178mm)	8.75Lx5.25Wx6.5H (222 x 133 x 165mm)	Automatic	5.8 lbs (2.6kg)	5
zcM2200	.28 - 2" (7 - 51mm)	1.18 - 39" (30 - 999mm)	3	7" (178mm)	8.75Lx5.25Wx6.5H (222 x 133 x 165mm)	Automatic	6.0 lbs (2.7kg)	6
zcM3000	.28 - 3" (7 - 76mm)	1.57 - 39" (40 - 999mm)	3	8" (203mm)	11.25Lx8Wx9H (286 x 203 x 229mm)	Automatic	14.6 lbs (6.6kg)	5

- zcM0800 and zcM0900 can operate on either batteries or the optional AC adaptor.
- For complete product specifications, see page # on right column.
- For 230V machines, please add "-2" to the end of the model number. (Example: zcM1000-2)

## ELECTRIC LABEL DISPENSER – QUICK REFERENCE CHART

MODEL #	Liner Width	Label Length	Maximum Roll Capacity	Feed Speed	Weight	Page #
LD2000V	.25 - 2.25" (6 - 57mm)	.25 - 3" (6 - 76mm)	6" (152mm)	2.2" (6.6cm) per sec.	2.0 lbs (.91kg)	17
LD6025	.25 - 4.5" (6 - 114mm)	.125 - 6" (3 - 152mm)	12" (305mm)	1.6" (3.9cm) per sec.	7.8 lbs (3.5kg)	18
LD6050	.25 - 4.5" (6 - 114mm)	.5 - 6" (13 - 152mm)	12" (305mm)	3.3" (8cm) per sec.	10.5 lbs (4.76kg)	18
LD5500	.25 - 5" (6 - 127mm)	.5 - 12" (13 - 305mm)	12" (305mm)	3.9" (10cm) per sec.	19.2 lbs (8.7kg)	20
LDX6050	.25 - 7" (6 - 178mm)	.5 - 6" (13 - 152mm)	12" (305mm)	3.3" (8cm) per sec.	11.3 lbs (5.12kg)	19
LD7500	.25 - 8" (6 - 203mm)	.5 - 12" (13 - 305mm)	12" (305mm)	3.9" (10cm) per sec.	21.1 lbs (10kg)	20
DC5100	.25 - 4.5" (6 - 114mm)	.5 - 6" (13 - 152mm)	12" (305mm)	3.3" (8cm) per sec.	11 lbs (4.95kg)	23
LDHANGTAB	.25 - 4.5" (6 - 114mm)	.125 - 6" (3 - 152mm)	16" (408mm)	3.3" (8cm) per sec.	9.5 lbs (4.3kg)	22

- For complete product specifications, see page # on right column.
- For 220V machines, please add "-2" to the end of the model number. (Example: LD6050-2)

\* Speed calculated at beginning diameter of take-up hub

## NON-ADHESIVE CUTTER – QUICK REFERENCE CHART

MODEL #	Maximum Width Cut	Maximum Cut Length	Max. Outside Thickness	Maximum Diam. Of Roll	Feed Speed	Weight	Page #
zcM1500W	2" (51mm)	.79 - 39" (20 - 999mm)		7" (178mm)		5.1 lbs (2.3kg)	27
zcM2500	2" (51mm)	1.18 - 39" (30 - 999mm)		7" (178mm)		5.5 lbs (2.5kg)	27
TBC50	4.33" (110mm)	.04 - 394" (1 - 9999mm)	.25" (6mm)	18" (457mm)	105 ft (32m) per min., 21" (43cm) per sec.	39 lbs (17.5kg)	25
TBC50-S	4.33" (110mm)	.04 - 394" (1 - 9999mm)	.25" (6mm)	18" (457mm)	105 ft (32m) per min., 21" (43cm) per sec.	39 lbs (17.5kg)	26
TBC50-SH	4.33" (110mm)	.04 - 394" (1 - 9999mm)	.25" (6mm)	18" (457mm)	105 ft (32m) per min., 21" (43cm) per sec.	39 lbs (17.5kg)	26
TBC50-HX	4.33" (110mm)	.04 - 394" (1 - 9999mm)	.25" (6mm)	18" (457mm)	105 ft (32m) per min., 21" (43cm) per sec.	39 lbs (17.5kg)	26
TBC50-H	3.54" (90mm)	.60 - 394" (15 - 9999mm)	.25" (6mm)	18" (457mm)	105 ft (32m) per min., 21" (43cm) per sec.	47 lbs (21.3kg)	25
TBC553-L	12.20" (310mm)	.04 - 394" (1 - 9999mm)	1.1" (28mm)	18" (457mm)	105 ft (32m) per min., 21" (43cm) per sec.	194 lbs (88kg)	26

- For complete product specifications, see page # on right column.
- For 220V machines, please add "-2" to the end of the model number. (Example: TBC50-2)

## Not Finding What You're Looking For?



### CALL US

to inquire about your specific material dispensing needs.

**(972) 248-1999**



### VISIT US ONLINE

to get a quote or see detailed information about our machines.

**STARTinternational.com**

## FOOTSWITCH

### Foot Switch

- Allows operator to advance material without pressing the button on the dispenser
- For the TDA080 series, order Part # TDA080PFS
- For the zcM1000 series, order Part # ZFOOTSWITCH



## zcM1000PCR

### Creaser

- Creaser for tapes that have a tendency to curl or are flimsy such as Kapton® tape
- Designed for the zcM1000 series, zcM1100, zcM2000 series, and the zcM2200
- Creaser will not crease tape narrower than .5" (13mm) in width



## CORE HOLDERS

### Tape Core Holder

- Individual core holder for use with smaller inside diameter cores
- Designed for the zcM1000 series, zcM1100, zcM2000 series, and the zcM2200. For TDA080 Core Holders please reference TDA080P601 (3") & TDA080P601-1 (1")



## zcM1000P550E

### Dual Cutting Head with Reel

- Dual Sensor Cutting Head (2 photosensors)
- Allows for the dispensing of two (2) rolls of tape
- Feeds and cuts when both pieces of tape are removed



## zcM1000P561-1 zcM1000P107N

### Protective Guard

- (P561-1) Minimizes finger injuries
- Standard on all 230V zcM1000 dispensers
- For zcM1000 & zcM2000 models

### Thin Tape Guide

- (P107N) Individual core holder for use with narrow 3" core rolls of tape
- Extra support to properly guide narrow tapes straight in the zcM1000 Series dispensers



zcM1000P561-1



zcM1000P107N

## zcM1000P025

### Liner Remover

- Removes bottom liner from double coated or metal tapes
- 1" (25mm) maximum width
- Designed for the zcM1000 series, zcM1100, zcM2000 series, and the zcM2200
- zcM1000P050 & zcM1000P080 also available



## zcM1000P026

### Reel Stand

- Allows for larger diameter rolls to be dispensed
- Up to 9.45" (240mm) in diameter
- Designed for the zcM1000 series, zcM1100, zcM2000 series, and the zcM2200
- zcM3000 External Stand Part Number: P030





## LD5100P50011B

### Photo Sensor Bracket Extension

- This addition provide the photo sensor to detect the label at a right angle (90 degrees)
- Can be used on the standard LD5000, LD5100 and LD7000 machines to detect clear and reflective materials



## TDLR050B

### Universal Liner Remover

- Peels and winds liner from tape or labels
- 6" (152mm) outside roll diameter
- Up to 2" (51mm) in tape width
- Uses a 3" (76mm) core
- Can function in conjunction with the zcM1000 series, zcM1100, zcM2000 series, and the zcM2200



## LDHANGER16

### Stand for Label Dispenser

- Allows operator to hang LD6000 and LDX6000 series label dispensers
- Aluminum construction
- Dimensions: 18"H x 16"W



## TDSTAND03 TDSTAND08

### 3" & 8" Wide External Reel Stand

- 3" and 8" (76mm and 203mm) maximum width
- Up to 20" (508mm) diameter rolls
- Allows for larger diameter rolls of tape or labels to be dispensed
- Use for labels, tape, and non-adhesive materials



TDSTAND03



TDSTAND08

## LDPBATTERY LDPBATTERY-CH

### Rechargeable External Battery Pack & Charger

- For use with the LD2000V and the LR4500
- Allows for portable use of the LD2000V and the LR4500
- 12V 7.2AH rechargeable battery
- Charge life: 2-3 shifts; Battery life: 3-5 years
- **Charger sold separately:** Part no. LDPBATTERY-CH



## LD-COUNTER

### Electric Label Dispenser Counter

- Counts the number of labels dispensed.
- Available for the LD5000, 5100, 5500, 7000 & 7500



## ACCESSORIES

### ACCESSORIES

To see a list of accessories please visit [STARTinternational.com/Accessories](http://STARTinternational.com/Accessories)

### PARTS

For Parts Lists of our products visit [STARTinternational.com/TechSupport](http://STARTinternational.com/TechSupport)

For  
Faster Service  
Please fill out  
**COMPLETELY!**

# Material Evaluation Form

\*\*\* PLEASE Copy this form and fill out completely \*\*\*

**Why fill this form out?** START International will test your material for free and recommend the product that best fits your application. "We don't just sell machines... we offer solutions."

Name: \_\_\_\_\_ Company: \_\_\_\_\_

Address: \_\_\_\_\_ City: \_\_\_\_\_ State: \_\_\_\_\_ Zip: \_\_\_\_\_ Country: \_\_\_\_\_

Tel: \_\_\_\_\_ Fax: \_\_\_\_\_ Email: \_\_\_\_\_

## Preferred Type of Equipment: (check all that apply)

If you would like us to test a specific machine, fill in here: \_\_\_\_\_

1

MACHINE

☐ Electronic Tape Dispenser

☐ Electric Label Dispenser

☐ Non-Adhesive Cutter

☐ Gummed Tape Dispenser

☐ Bottle Labeler

☐ Other: \_\_\_\_\_

## Please Describe the Following: (if applicable)

2

APPLICATION

Required Cut Length(s) and Tolerance(s): \_\_\_\_\_  
(Tape Dispenser and Non-Adhesive Cutter Only)

Process being performed: \_\_\_\_\_

Present process time: \_\_\_\_\_ Desired Process time: \_\_\_\_\_

3

MATERIAL

Type of Tape (material, width, brand): \_\_\_\_\_

Type of Label / Die-Cut Part (material, size, brand): \_\_\_\_\_

Is the material spooled ☐ or loose ☐? For spooled, what is the weight of the spool including material? \_\_\_\_\_  
(Non-Adhesive Cutter Only)

Diameter of Bundle/Roll: \_\_\_\_\_

4

USAGE

Number of Pieces used Per Shift: \_\_\_\_\_ Per Day: \_\_\_\_\_

Type of Environment used in: \_\_\_\_\_

Please include other important application information: \_\_\_\_\_

Please **COPY** this form and mail it  
along with your sample material to:

Attn. Technical Services  
START International  
4270 Airborn Drive  
Addison, TX 75001  
U.S.A.

\*\*\*\*\*  
**PLEASE BE SURE TO SEND A  
MINIMUM OF 12 FEET  
OF THE  
EXACT MATERIAL BEING USED  
IN PRODUCTION**  
\*\*\*\*\*

Steve S.



# Productivity in your backyard and at your fingertips.



## General Information

### CORPORATE HEADQUARTERS:

#### START International

4270 Airborn Dr.  
Addison, TX 75001, U.S.A.

Toll-Free (US and Canada) 800.259.1986  
Telephone 972.248.1999  
Fax 972.248.1991

Email [info@startinternational.com](mailto:info@startinternational.com)  
Website [www.STARTInternational.com](http://www.STARTInternational.com)

#### Office hours:

8am-5pm CST (Central Standard Time)  
Monday – Friday

### SHIPPING WITHIN NORTH AMERICA

Unless instructed otherwise, orders are shipped UPS® Ground. We prepay and add shipping charges to your order. Motor freight shipments are F.O.B. shipping point, freight collect.

### SHIPPING INTERNATIONAL

Unless specified on P.O. all orders are shipped FedEx® or UPS®, as per customer request. We prepay and add shipping charges to your order.

### INTERNATIONAL CUSTOMERS

START International welcomes its global customers. Payment methods include a wire transfer or credit card. Please contact us by telephone, email or fax for more information.

### TECHNICAL ASSISTANCE

We are happy to help you in choosing the correct machine to fit your needs. It is strongly recommended that all materials (tape, labels, die-cut parts, tubing, etc.) be tested prior to purchase. We will test any material sent to our office for proper function and warrant the machine for the specific use intended.

Please make a copy of the Material Evaluation Form on the previous page. Complete the form and send it in with your material to be tested. We will provide you with a written copy of the test results of your material and recommend a product to fit your needs. Photos and videos of evaluation will be provided on request.

### RETURNS AND EXCHANGES

We guarantee that our products will perform to the published specifications. Please contact customer service for a Return Materials Authorization (RMA) within 15 days of receipt of machine if a return or exchange is required. Packages without prior authorization may be refused.

All returns must be shipped prepaid, in manufacturer's original packaging, in "as-new" condition and are subject to inspection for damage or misuse prior to issuance of credit. We do not accept returns on special orders. Restocking fees may apply. Goods must be received by START in "as-new" condition within 7 days of issuing the RMA.

### WARRANTIES

START International warrants all products against defects in design, materials and workmanship.



Randa H.

Materials used in some product photos throughout this catalog are for example only and do not suggest endorsement of the products represented. Trademarks and/or registered trademarks are the property of those represented. START International® logo and TheTapeDispenser® and TheLabelDispenser® and TheDieCutPartDispenser® and Labelmoto® and cYli-SIZE™ are trademarks and/or registered trademarks of Start Manufacturing, Inc., DBA START International.

# Need more information? Visit us online!

