



**The future of product marking.**

Made in Germany.

**See for yourself.**



*Our head office in Karlsruhe*

#### Germany

cab Produkttechnik GmbH & Co KG

Postfach 1904

76007 Karlsruhe

Wilhelm-Schickard-Str. 14

76131 Karlsruhe

Telefon +49 721 6626-0

Telefax +49 721 6626-249

[www.cab.de](http://www.cab.de)

[info@cab.de](mailto:info@cab.de)

## Contents

See for yourself .....	2
Innovation requires experience.....	4
Count on our service.....	6
We supply solutions. ....	8
EOS 1/4 label printers.....	10
MACH4 label printer.....	11
A+ label printers .....	12
A4+M label printer .....	14
A+ peripherals.....	15
XD4M label printer.....	16
XC label printers .....	17
Hermes+ label printer.....	18
PX4/PX6 label printers.....	19
FL10/FL20 fiber laser.....	20
Fiber laser peripherals .....	21
Our Software-tools.....	22
High quality print images with cab ribbons.....	24
Precise printing with cab labels .....	25
VS 120 label dispenser.....	26
We are at home in every industry .....	27

# Innovation requires experience.



*State-of-the-art manufacturing facilities and experienced staff – the perfect combination.*

## Quality in the first place

It is no coincidence that we are located in the Karlsruhe Technology Park, in the midst of technology companies that are just as creative and innovative as we are. It is from here that we have established a solid position in the global market with our high-quality, state-of-the-art product labeling devices and systems.

Our customers appreciate the many years of experience that have gone into our devices. They have been putting their trust in top quality "Made in Germany" since 1975.

## Strength by innovation

Another reason why they always come back to our products is that we are the leaders when it comes to innovation, a position we are not going to give up.

## New designs and materials

Karlsruhe is also home to our "think tank", our development department. This is where our devices that are to be used in the industry, by service providers and in business take shape. Experiences gained from the daily use of the devices is combined with new, pioneering ideas, established materials are replaced by even more robust, more environmentally friendly materials and traditional designs are upgraded with new design lines.

Our new line of devices uses innovative, extremely durable plastics. They exhibit high impact strength, excellent scratch resistance and a high surface hardness. They also reduce the weight of the devices. The surfaces are also easy to clean and maintain. The material mix is reduced to a minimum, thus simplifying the recycling process.





- › **Absolute precision in parts manufacturing and assembly**
- › **Consistently high quality**
- › **Reliable products – throughout their whole life cycle**



#### **“Made in Germany”**

There's a reason why we produce 95% of the mechanical components for our devices and equipment at our own manufacturing facilities. We like to keep a handle on things – and make sure we meet high quality manufacturing requirements. All our parts are produced on high-quality, cutting-edge equipment and are subject to strict quality control before they are released for installation.

#### **Our benchmark: ISO 9001**

Our manufacturing facilities meet the strict requirements of this international standard. Consistent processes and manufacturing workflows ensure we meet the same high quality standards at all times. The advantages are clear – you get reliable and long-lasting products that perform daily in the toughest conditions to ensure that downtimes are a thing of the past.



*With innovative technology for better climate protection  
Energy saving – Environmentally friendly*

## Count on our service.



*Trained staff and specialists ensure the best possible customer care.*

### Good advice starts before an investment is made

If you've got a particular task and are looking for a functional, reliable and cost-effective solution, then you've come to the right place! cab is pleased to provide you with all the support and expertise you and your company need – before you even make a purchase.

### Pre-sales and after-sales support

cab has an excellent reputation worldwide when it comes to intelligent product marking solutions and reliable full service. Of course, this hasn't come about simply by chance. After installing the equipment you've ordered, we provide your employees with intensive and in-depth training – on-site at your company if you prefer. On request, we can also service and maintain your equipment as necessary throughout the product life cycle. Our ultimate aim is to ensure that everything runs smoothly.

- › **Trained staff**
- › **State-of-the-art production equipment**
- › **Maximum vertical integration**
- › **Worldwide deliveries**
- › **Innovative products**



#### Help when you really need it

Even the best companies require repair and maintenance, but that doesn't make it any less irritating when something goes wrong. That's why fast and straightforward help is all the more important. Our service teams are highly trained and well equipped to deal with these situations. They are happy to tackle your problems at short notice and ensure fast delivery of spare parts and high-quality troubleshooting services.

#### We have a global presence

Customer proximity is also a question of presence. Seven subsidiaries and 350 professional distribution partners in over 80 countries worldwide ensure that we are there when you need us.

# We supply solutions.



*Perfect product labeling*

## No two tasks are the same

cab marking technology is at home in virtually any industry today. This should come as no surprise as it is used almost everywhere. Our devices are employed in commercial applications, in tough continuous operation in industry and for a wide range of services. We incorporate this cross-sectoral experience into our development processes, thus ensuring that our customers benefit from our wide-ranging know-how. That is why cab is known as a solution provider rather than just an equipment supplier. After all, the key is to incorporate cab marking technology into your company environment so as to ensure a perfect fit and reliable integration.

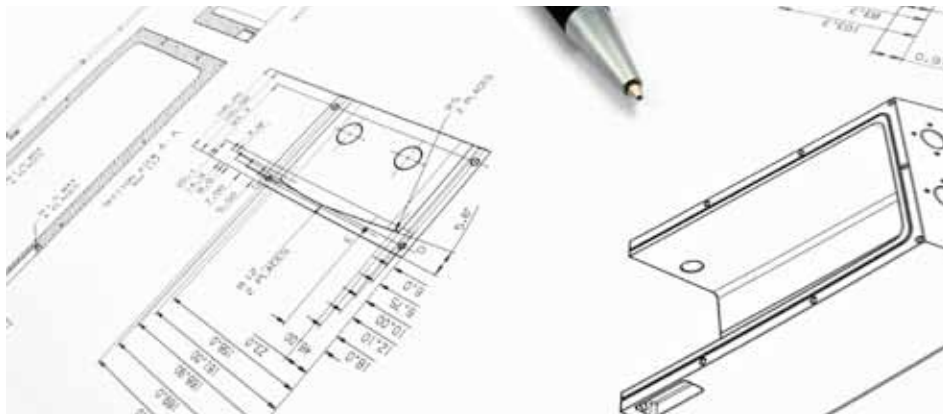
## Hardware is one aspect ...

If you are looking for reliable process integration coupled with maximum customization, then you're in safe hands with our IT specialists. It all starts with the wide variety and modular design of our devices. Complemented by a whole range of peripherals, they integrate seamlessly into process chains and provide a reliable service.





- › Fully automatic marking
- › Peripherals satisfy every requirement
- › Ultimate process integration



#### ... customized programming the other

Our IT specialists provide you with everything you need – from easy-to-operate label software and the integration of external devices to data retrieval from databases and integration in ERP systems such as SAP R/3. They are also able to handle customized programming with ease!

#### It's all about using the right material

Don't try to save on consumables! They must be 100% reliable. That's why we offer a wide range of label types and ribbons for every application and requirement.



The new thermal printer – a modern, cost-effective solution for printing labels in production, logistics and retail.

■ Standard    □ Option

Cutting-edge technology, and exceptional ease-of-use – for a great price

The key feature of the new EOS is that it is the first label printer to be fitted with a touchscreen as standard. This makes it easy to call up existing labels, add data and print them off – all without being connected to a PC. Complete labels can be saved to a USB memory stick or the internal memory of the EOS printer.

EOS 1 and EOS 4 differ in terms of their size. The larger EOS 4 can accommodate label rolls up to 8" in diameter. All labels are centered automatically in the printer. Both units are available with 200 or 300 dpi resolution. What's more, wear parts can be replaced in a matter of seconds – usually without the need for any tools.

Please refer to our product catalog for the complete technical specifications or go to [www.cab.de](http://www.cab.de)

Label printer		EOS 1	EOS 4
Print head	Printing method	Thermal transfer / Thermal direct	
	Print resolution dpi	203 / 300	203 / 300
	Printing speed up to mm/s	125	125
	Print width up to mm	108 / 105.7	108 / 105.7
Material	Total diameter up to mm	152.4	203.2
	Label width mm	10 – 116	
	Label height mm	5 – 1000	
Ribbon	Ink	outside or inside	
	Variable length up to m	360	
Printer dimensions	Height x Depth x Width mm	189 x 322 x 253	245 x 412 x 264
Electronics	Processor high speed MHz 32 Bit	400	
	(RAM) MB	64	
	Memory IFFS MB Flash	16	
	Battery buffer for	Real-time clock with printout of time and date Data storage in the event of a power cut	
Interfaces	Serial RS232 C	□	
	USB 2.0 Full Speed Slave for PC	■	
	Ethernet 10/100 Base T	■	
	Peripherals connection for cutter	□	■
	3x USB Master for	external control panel, keyboard, scanner, service key	

# MACH4 label printer.



Dispense label



Cut label



Tear label

## New versatility

MACH4 breaks new grounds. High-quality, robust synthetics provide a new look that delivers reliable technology.

It offers top performance and first-rate print quality. Our main focus during the development of this printer was easy handling and a high degree of reliability: the centered material feed, for example, eliminates the need for adjustments when the material is changed.

Please refer to our product catalog for the complete technical specifications or go to [www.cab.de](http://www.cab.de)

■ Standard    □ Option

Label printer		MACH4		
	Printing method	Thermal transfer/Thermal direct		
	Print resolution dpi	203	300	600
	Print speed up to mm/s	200	200	100
	Print width up to mm	104	105.6	105.6
Material	External diameter up to mm	205		
	Label width mm	6 – 116		
	Label height mm	5 – 4500		
Ribbon	Color page	outside or inside		
	Variable length up to m	360		
Printer dimensions	Height x Depth x Width mm	312 x 435 x 240		
Electronics	Processor speed MHz	266		
	(RAM) MB	64		
	Printer memory IFFS MB Flash	8		
	Slot for CF card type I	■		
	Slot for wireless LAN card	■		
	Battery buffer for	real-time clock, printout of time and date Data storage on shut-down		
	Warning signal	Acoustic signal in case of error		
Interfaces	Centronics bidirectional in accordance with IEEE 1284	□		
	RS232 C	■		
	USB 2.0 High speed slave for PC	■		
	Ethernet 10/100 Base T	■		
	WLAN card 802.11 b/g	□		
	2x USB masters for	external operation panel, keyboard, scanner, service key		

# A+ label printers.



From narrow to extra-wide or centered material feed.

■ Standard □ Option

## Extremely versatile

The A+ series is ideal for solving practically any marking task. With a broad range of peripherals, accessories and software, our printers can be adapted to meet any requirements. We offer various sensors and adapters for label dispensing solutions. During development, we focused first and foremost on simple and convenient operation coupled with high reliability. The printing units and housing are made of high-quality materials and are perfectly matched. The A+ series is always a safe option, because it offers almost unlimited possibilities, be it for stand-alone operation in conjunction with PC/label software or for network operation linked with SAP. There's a good reason why our A+ label printer has a reputation as an all-rounder!

Please refer to our product catalog for the complete technical specifications or go to [www.cab.de](http://www.cab.de)

Label printer		A2+		A4+		
	Printing method	Thermal transfer/Thermal direct				
	Print resolution dpi	300	600	203	300	600
	Print speed up to mm/s	150	100	250	250	100
	Print width up to mm	54.2	57	104	105.6	105.6
Material	External diameter up to mm	205		205		
	Label width mm	4 – 63		20 – 116		
	Label height from mm	4	4	4	4	4
	Label height up to mm	5000	2000	5000	4000	1000
Ribbon	Color page	outside or inside				
	Variable length up to m	500				
Printer dimensions	Height x Depth mm	274 x 446				
	Width mm	190		242		
Electronics	Processor speed MHz	266				
	(RAM) MB	64				
	Memory IFFS MB Flash	8				
	Slot for CF card type I	■				
	Slot for wireless LAN card	■				
	Battery buffer for	real-time clock, printout of time and date Data storage on shut-down				
	Warning signal	Acoustic signal in case of error				
Interfaces	Centronics bidirectional in accordance with IEEE 1284	□				
	RS232 C	■				
	USB 2.0 High speed slave for PC	■				
	Ethernet 10/100 Base T	■				
	RS422, RS485	□				
	Peripheral connection	■				
	WLAN card 802.11 b/g	□				
	2x USB masters for	external operation panel, keyboard, scanner, service key				





■ Standard □ Option

### From narrow to extra-wide

The wide variety of the A+ series matches its versatility in operation. The A+ label printer is available in print widths ranging from 54.2 mm to 216 mm. This enables the production of extremely narrow and very wide labels with an excellent print resolution of between 200 and 600 dpi. The print speed ranges from 100 to 250 mm/s depending on the model you choose, ensuring faster throughput times and thus lower process costs!

Please refer to our product catalog for the complete technical specifications or go to [www.cab.de](http://www.cab.de)

Label printer		A6+		A8+
	Printing method	Thermal transfer/Thermal direct		
	Print resolution dpi	203	300	300
	Print speed up to mm/s	200	200	150
	Print width up to mm	168	162.6	216
<b>Material</b>	External diameter up to mm	205		205
	Label width mm	50 – 176		50 – 220
	Label height from mm	6	6	10
	Label height up to mm	4000	3000	2000
<b>Ribbon</b>	Color page	outside or inside		
	Variable length up to m	500		360
<b>Printer dimensions</b>	Height x Depth mm	274 x 446		
	Width mm	302		352
<b>Electronics</b>	Processor speed MHz	266		
	(RAM) MB	64		
	Printer memory IFFS MB Flash	8		
	Slot for CF card type I	■		
	Slot for wireless LAN card	■		
	Battery buffer for	real-time clock, printout of time and date Data storage on shut-down		
	Warning signal	Acoustic signal in case of error		
<b>Interfaces</b>	Centronics bidirectional in accordance with IEEE 1284	□		
	RS232 C	■		
	USB 2.0 High speed slave for PC	■		
	Ethernet 10/100 Base T	■		
	RS422, RS485	□		
	Peripheral connection	■		
	WLAN card 802.11 b/g	□		
	2x USB masters for	external operation panel, keyboard, scanner, service key		

# A4+M label printer.



This printer is not just for labels. The A4+M is suitable for materials with a thickness of up to 4 mm.

■ Standard    □ Option

### For challenging surfaces

The A4+M does not require any printhead adjustments for different material widths. It can also be used for printing very narrow or thick endless materials. The gap height for flat tubes and synthetic straps is 4 mm. The optimum print speed for materials that are difficult to imprint is 30-125 mm/s. Operation and software are compatible with the A+ series.

Please refer to our product catalog for the complete technical specifications or go to [www.cab.de](http://www.cab.de)

Label printer		A4+M	
	Printing method	Thermal/Thermal transfer	
	Print resolution dpi	300	600
	Print speed up to mm/s	125	100
	Print width up to mm	105.6	105.6
Material	External diameter up to mm	205	
	Label width mm	4 – 106	
	Label height mm	5 – 4000	5 – 1000
Ribbon	Variable length up to m	500	
Printer dimensions	Height x Depth mm	274 x 446	
	Width mm	242	
Electronics	Processor speed MHz	266	
	(RAM) MB	64	
	Memory IFFS MB Flash	8	
	Slot for CF card type I	■	
	Slot for wireless LAN card	■	
	Battery buffer for	real-time clock, printout of time and date Data storage on shut-down	
	Warning signal	Acoustic signal in case of error	
Interfaces	Centronics bidirectional in accordance with IEEE 1284	□	
	RS232 C	■	
	USB 2.0 High speed slave for PC	■	
	Ethernet 10/100 Base T	■	
	RS422, RS485	□	
	Peripheral connection	■	
	WLAN card 802.11 b/g	□	
	2x USB masters for	external operation panel, keyboard, scanner, service key	



Centered material feed

## A<sup>+</sup> peripherals.



*Printer with stacker*

### Reliability that “fits”

The comprehensive peripherals in the A<sup>+</sup> series enable these printers to tackle virtually any task, allowing them to demonstrate their reliability in any environment involving tough continuous operation.

### Customized handling

Labels can either be cut or perforated. Various dispense adapters enable either automatic or manual dispensing. These labels can also be rewound for the next processing step. For integration into a production line, we offer an applicator for semi-automatic printing and applying.

### All popular interfaces

We also offer CF storage cards and keyboards for printing labels in stand-alone mode without a PC. Comprehensive control options from all popular interfaces.



*A1000 applicator for real-time labeling*



*Blade and collecting box*



*Test device for linear barcodes*



*Internal rewinder*



*External rewinder*



*External unwinder*



*Stand-alone operation without PC*

# XD4M label printer.



Two good sides – the XD4M prints on front and back with two print mechanisms.

■ Standard    □ Option

### Precision two times

With two stacked print mechanisms the XD4M can print both sides of paper, card-board, textiles, plastics or even flat synthetic tubes at the same time. It is not necessary to adjust the printhead for different material widths. The printer is especially suitable for printing on narrow and/or thick materials as well as on flat-pressed endless tubes and difficult printable surfaces.

Please refer to our product catalog for the complete technical specifications or go to [www.cab.de](http://www.cab.de)

Label printer		XD4M
	Printing method	Thermal transfer
	Print resolution dpi	300
	Print speed up to mm/s	125
	Print width up to mm	105.6
Material	External diameter up to mm	300
	Width of carrier tape or endless material mm	10 – 110
	Height of carrier tape or endless material up to mm	2000
Ribbon	Variable length up to m	360
Printer dimensions	Height x Depth mm	395 x 554
	Width mm	248
Electronics	Processor speed MHz	266
	(RAM) MB	64
	Memory IFFS MB Flash	8
	Slot for CF card type I	■
	Slot for wireless LAN card	■
	Battery buffer for	real-time clock, printout of time and date Data storage on shut-down
Interfaces	Warning signal	Acoustic signal in case of error
	USB 2.0 High speed slave for PC	■
	Ethernet 10/100 Base T	■
	Peripheral connection	■
	WLAN card 802.11 b/g	□
	2x USB masters for	external operation panel, keyboard, scanner, service key



# XC label printers.

NEW



Two integrated printing units meet all your application and legal requirements.

**NEW: 2-color printing!**

Our XC series opens up a whole new dimension in product marking, enabling two-color printing in a single pass. The XC4 and XC6 meet all the criteria of the new classification and labeling system for chemicals in line with GHS. New but still tried and tested: The electronic system, operation panel and both printing units are currently used in our A+ series industrial printers. And they are known for their reliability!

Please refer to our product catalog for the complete technical specifications or go to [www.cab.de](http://www.cab.de)

■ Standard    □ Option

Label printer		XC4	XC6
	Printing method	Thermal transfer	
	Print resolution dpi	300	300
	Print speed up to mm/s	125	125
	Print width up to mm	105.6	162.6
Material	External diameter up to mm	300	
	Label width mm	20 – 116	50 – 176
	Width of carrier tape or endless material mm	25 – 120	50 – 180
	Label height mm	20 – 2000	20 – 1500
Ribbon	Variable length up to m	360	
	Ribbon saver print head 2	■	
Printer dimensions	Height x Depth x Width mm	395 x 554 x 248	395 x 554 x 358
	Weight kg	22	24
Electronics	Processor speed MHz	266	
	(RAM) MB	64	
	Memory IFFS MB Flash	8	
	Slot for CF card type I	■	
	Slot for wireless LAN card	■	
	Battery buffer for	real-time clock, printout of time and date Data storage on shut-down	
	Warning signal	Acoustic signal in case of error	
Interfaces	USB 2.0 High speed slave for PC	■	
	Ethernet 10/100 Base T	■	
	Peripheral connection	■	
	WLAN card 802.11 b/g	□	
	2x USB masters for	external operation panel, keyboard, scanner, service key	

# Hermes+ label printer.

NEW



Printing to either the left or right! Hermes+ is the perfect

choice for industrial, automated operation! (Applicator is optional)

■ Standard    □ Option

### For tough industrial operation

Experience and technical know-how from more than 30 years of product development are combined in our Hermes+ print and label system. That is why many of our customers describe it as the “ultimate” cab product. It was designed specifically for fully automatic printing and labeling in production lines. Moreover, the process of removing the label from the silicon liner and transferring it to the vacuum plate takes place in real time.

Please refer to our product catalog for the complete technical specifications or go to [www.cab.de](http://www.cab.de)

Label printer		Hermes+		
	Printing method	Thermal transfer/Thermal direkt		
	Print resolution dpi	203	300	600
	Print speed up to mm/s	250	250	100
	Print width up to mm	104	105.6	105.6
Material	External diameter up to mm	205 / 305		
	Label width mm	10 – 114		
	Label height mm	8 – 250		
Ribbon	Variable length up to m	500		
Printer dimensions	Height x Depth mm	400 x 400 / 538 x 518		
	Width mm	255		
Electronics	Processor speed MHz	266		
	(RAM) MB	64		
	Memory IFFS MB Flash	8		
	Slot for CF card type I	■		
	Slot for wireless LAN card	■		
	Battery buffer for	real-time clock, printout of time and date Data storage on shut-down		
	Warning signal	Acoustic signal in case of error		
Interfaces	Centronics bidirectional in accordance with IEEE 1284	□		
	RS232 C	■		
	USB 2.0 High speed slave for PC	■		
	Ethernet 10/100 Base T	■		
	RS422, RS485	□		
	WLAN Karte 802.11 b/g	□		
	2x USB masters for	external operation panel, keyboard, scanner, service key		

# PX4/PX6 label printers.



A great piece of technology – printing modules for sophisticated industrial environments.

■ Standard □ Option

## As robust as precise

Printing and labeling in every position and in every direction – printers in the PX series can be integrated in all existing labeling systems. The models work in every mounting position. With their consistently robust design, they can satisfy every industrial requirement and are absolutely reliable. The devices are easy to handle and all wear parts can be replaced quickly and easily.

Please refer to our product catalog for the complete technical specifications or go to [www.cab.de](http://www.cab.de)

Label printer		PX4			PX6	
	Printing method	Thermal transfer/Thermal direct				
	Print resolution dpi	203	300	600	203	300
	Print speed up to mm/s	300	250	100	200	200
	Print width up to mm	104	105.6	105.6	168	162.6
Material	Label width mm	10 – 116			50 – 176	
	Label height mm	6 – 5000	6 – 4000	6 – 1000	12 – 4000	12 – 3000
Ribbon	Variable length up to m	600				
Printer dimensions	Height x Depth mm	300 x 333			300 x 393	
	Width mm	245				
Electronics	Processor speed MHz	266				
	(RAM) MB	64				
	Memory IFFS MB Flash	8				
	Slot for CF card type I	■				
	Slot for wireless LAN card	■				
	Battery buffer for	real-time clock, printout of time and date Data storage on shut-down				
	Warning signal	Acoustic signal in case of error				
Interfaces	Centronics bidirectional in accordance with IEEE 1284	□				
	RS232 C	■				
	USB 2.0 High speed slave for PC	■				
	Ethernet 10/100 Base T	■				
	WLAN card 802.11 b/g	□				
	2x USB masters for	external operation panel, keyboard, scanner, service key				

# FL10/FL20 fiber laser.



Automatic marking of type plates



Scope scaling with rotating axis



Instrument marking



Retraceable with 2D codes



Innovative, economical, precise and fast – the leading diode-pumped fiber lasers from cab.

## Steel, aluminum, plastics

The resolution and print quality of our lasers are flawless. They are economical, precise, fast and ideal for marking many different materials.

Our air-cooled Ytterbium fiber lasers mark with high beam mode and an initial output of up to 20 watt. They can also be integrated into production lines.

Please refer to our product catalog for the complete technical specifications or go to [www.cab.de](http://www.cab.de)

Fiber laser		FL10	FL20
Jet source	cw laser output up to	10 Watt	20 Watt
	Pulse energy	0.5 mJ	1 mJ
	Laser type	Ytterbium fiber laser, pulsed	
	Cooling	air-cooled	
	Wave length	1,064 nm	
	Jet quality	TEM oo	
	Pulse width	> 120 nsec	
	Pulse repetition frequency	20 – 80 KHz	
	Pilot laser	650 nm / 1 mW	
	Laser safety class	4	
Scan head	Length of fiber connection	5 m	3 m
	Mounting	in horizontal or vertical direction	
Scan speed		up to 5,000 mm/s	
Plane lens system		100	254
F-Theta	Focal length	138±2	204±2
	Field size	60 x 60 mm	112 x 112 mm
	Spot ø	25 µm	35 µm
	△ resolution	1000 dpi	735 dpi
Interfaces	PC connection	PCI, TCP/IP	
	Laser control interface for	ready, start/end of labeling process, laser emission Shutter/chamber interlock	
Operation	Operating voltage	100 – 240 VAC / 50 – 60 Hz	
	Operation consumption	350 watt	450 watt
	Safety mechanism	2A T at 230 VAC	2.5A T at 230 VAC
		4A T at 110 VAC	5 A T at 110 VAC
	Operating temperature	5 – 40° C	
Dimensions and weight	Humidity, not condensing	15 – 90%	
		control	scan head
	Height x Width x Depth mm	178 x 420 x 420	110 x 170 x 330
Weight kg		17	8



# Pheriphery Fiber laser.



Top left: Label Marker; bottom left: Laser safety housing LSG 65, middle: Laser safety housing LSG 100 with round table module RTM 650, right: Laser safety housing LSG 100 with type plate handling THS 4.2

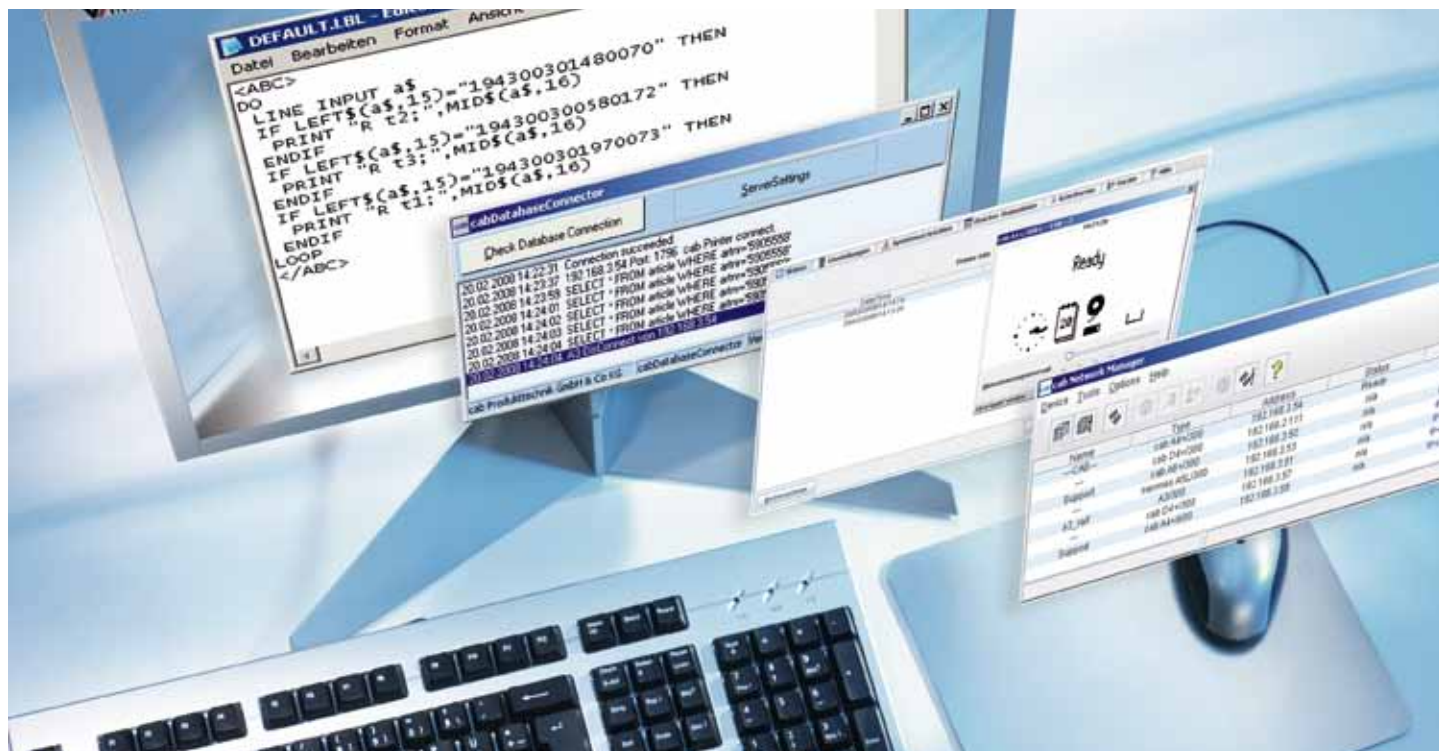
## For the safe use of lasers

In addition to our lasers we have developed a corresponding program of laser safety housings. We offer a desktop model for small batches (LSG 65) and the standard device (LSG 100), also available with the rotary table (RTM 650) or the type plate marker (THS 4.2), both with integrated control panels. We also offer a desktop model for flexible labeling. All products are developed and manufactured in Germany with the greatest attention to quality.

Please refer to our product catalog for the complete technical specifications or go to [www.cab.de](http://www.cab.de)

Laser marking systems	LSG 65-FL	LSG 100-FL	LSG 100-RTM Round table module	LSG 100-THS4 Type plate handling	LM 160 (254)-FL Label Marker
<b>Housing</b>	Sheet steel painted/ plastic door	Sheet steel painted			Aluminum/ sheet steel
<b>Laser safety class</b>	Class 1	Class 1			Class 1
<b>Dimensions L x W x H mm</b>	815 x 675 x 615	1120 x 1000 x 2280	1280 x 1000 x 2280	1120 x 1210 x 2280	802 x 440 x 520 (730)
<b>Weight ca. kg</b>	120	450	470	480	50
<b>Laser safety window mm</b>	200 x 100 from acrylic				100 x 50
<b>Installation options</b>	–	2 x 19", 4U installation frame for PC/laser			–
<b>Indexing accuracy RTM 650</b>	–	–	±0.1 for ø600 mm	–	–
<b>Turning cycle time</b>	–	–	2.5 seconds/ 180° about face	–	–
<b>Interior lighting</b>	■	■	■	■	■
<b>Focusing device</b>	■	■	■	□	–
<b>Suction guide DN 50</b>	■	■	■	■	■
<b>Service door open/close</b>	manual	pneumatic	pneumatic	pneumatic	manual
<b>Numerical Z-axis lift mm</b>	235	500	500	500	–
<b>Control panel</b>	integrated	PLC			integrated
<b>Power supply</b>	100 – 240 VAC – 50/60 Hz	220 – 240 VAC – 50/60 Hz / 3500 W 100 – 140 VAC – 50/60 Hz / 1750 W			100 – 240 VAC – 50/60 Hz
<b>Maximum power consumption</b>	250 W	3500 W / 1750 W			100 W

# Our software tools.



*The right software for every solution – for seamless operation.*

## JScript programming

The printer language is easy to program and to integrate into your system. Variable data can be linked through host applications. Label design, graphic data and fonts are stored on the compact flash card. The host computer only sends the variable and/or altered data to the device.

## abc – basic compiler

As an integrated element of the firmware, it enables the printer to process data using basic programming before being transmitted to print editing. In this way, external printer languages can be replaced or data from other systems, c. g. PLC or a scale, can be transferred to be printed on different label sizes.

## Database connector

It enables stand-alone printers with additional network connection to link up data from a SQL-compatible database and to print on a label. Data can be rewritten and modified simultaneously to the printing process.

## Print monitoring in the intranet and on the Internet

In conjunction with standard programs such as browsers and FTP clients, the integrated HTTP and FTP server enables printer monitoring, configuration, firmware updates and memory card administration.

## Administration network manager

It enables users to control several printers within the network at the same time.

## Printer drivers

Windows® drivers: Our drivers have been officially accredited by Microsoft and therefore ensure that labels can be directly designed and printed with Windows-based programs.

Apple Mac OS X® drivers\*: We also offer a CUPS-based driver for Mac OS X programs.

Linux drivers\*: A CUPS-based driver can also be used for Linux programs

## Label software

cablabel R2+: Comprehensive standard label software – free with purchase of printer. Additional label software: cab label printers and label systems also support other common label software such as Codesoft, Easylab, Bartender, NiceLabel and Labelview

*\* not for XD4M and Hermes*



- › Our standard software – included in scope of delivery
- › Silver level partner in SAP Printer Vendor program



#### Integration in SAP R/3\*

SAP and cab have jointly developed the “replacement methods” to control the cab printers easily with SAPScript from SAP R/3. cab is a silver level partner of the SAP Printer Vendor program and thus has access to the SAP development environments to provide high quality printer support.

*\* SAP and R/3 are registered trademarks of SAP AG.*



### SAP® Printer Vendor Program

Set up files in the software program → Import replace file in SAPScript → Replace variable data with SAPScript and print output

**Upload-Methode SAP R/3 note no. 137431**



## High quality print image with cab ribbons.



*Consistently good print quality and field-tested choice of colors for your labels.*

### Why choose ribbons from cab?

With more than 20 types of ribbon for narrow or wide labels, for product marking or type plates, cab offers you the right solution for every application. Tailored specifically to cab printers, our ribbons offer consistently high quality. But that's not all. The trailer is also perfectly matched with our equipment, thus avoiding the misprints or damage to the print head caused by long or metallized trailers.

### Wax ribbons

These ribbons are ideal for fast and economical printing on vellum and coated paper. They produce high-contrast, sharp and clear labels with a very high density provided that smudge resistance is not a top priority.

### Resin/wax ribbons

These ribbons are highly recommended as they offer a wealth of opportunities for chromated or coated papers as well as plastics. They exhibit higher scuff and scratch resistance than pure wax ribbons while offering the same density.

### Resin ribbons

Above all, these ribbons offer excellent resistance against scratching, extreme temperatures and solvents. They are therefore used primarily for plastics, even with coated surfaces. Our B110CX ribbons even comply with UL and CSA standards. Ribbons resistant to washing and ironing are also available on request.

### Customized ribbons

We can supply colored ribbons (wax, resin/ wax, resin) on request. They exhibit the same characteristics as black ribbons. Resin ribbons are also available in gold and silver. They are designed primarily for high-quality decorative labels.



# Precise printing with cab labels.



*No matter what your requirements, we have the right label.*

## Labels and ribbons

Do you always expect full adhesive strength and flawless surfaces? So do we! cab labels and ribbons are available in all popular qualities and dimensions. They are also available in small quantities and at very low cost direct from stock. cab also caters to other requirements, such as customized labels with a company logo, etc.

## M-Cote white

M-Cote applications include address labels and general marking of goods and products in industry and the distribution and service sectors. This material has a high white intensity combined with a permanent adhesive and works well with all cab printers.

## Polyester white dull

Ideal for the individual marking of stored goods, warehouse storage locations, indoor and outdoor areas, high-risk areas and many more applications. This high-quality polyester material ensures a clean and professional look. It is highly resistant to tearing, dirt, water and oil and can withstand temperatures from -20° C up to 80° C.

## Polyester silver dull

This label type is perfect for label printers working in a high resolution! It delivers high-quality product type plates and information signs for marking equipment for indoor and outdoor use. Its characteristics are rounded off by strong adhesive power on smooth surfaces and temperature resistance from -20° C up to 130° C.

# Semi-automatic label dispenser.

NEW



The VS 120 dispenses pressure-sensitive labels at adjustable speeds.

### Precise and simple manual label dispensing

The new label dispensers from cab deliver outstanding precision for the positioning of labels at adjustable dispensing speeds and fully rewind label backing at the same time. Labels are separated directly from their backing regardless of the feed rate. And thanks to its precise positioning, the label sensor can even be used to remove very small labels.

### Two versions for the relevant application

The cab label dispenser is available in two different versions.

The conventional HS version dispenses labels from top to bottom, meaning that labels are removed with their bottom edge leading and are applied to the product or packaging in the same way.

The VS version dispenses labels from bottom to top, meaning that labels comes away from their backing with the top edge leading. The advantage of this system is that users may not have to turn the label before applying it.

Label dispenser	VS 120
Label width mm	15 – 120
Label height mm	4 – 600
Roll ø up to mm	205
Label winding	inside or outside
Core ø from mm	38 – 76
Feed rate mm/sec	50 / 150
Winding ø carrier tape up to mm	155
Adjustment of label length	by microsensor
Quantity display	four-digit counter
Keys	Reset / speed / dispense on demand / start button
Storage and transport temperature	-25° to 60°C
Power consumption	approx. 70 W
Operating voltage	100 – 240 VAC 50/60 Hz
Operating temperature	+ 5 – 40° C
Safety requirements	CE, FCC class A, CB,CCC, UL
Height x Depth x Width mm	250 x 300 x 230
Weight kg	3.5

# We are at home in every industry.

## General

- › Inventory labels
- › labels for libraries
- › labels for laundry tags
- › printing of tickets and admission tickets

## Automotive industry, agricultural vehicles

- › Labeling of spare parts
- › customized parts
- › production labels
- › warranty stickers
- › fine dust stickers

## Fastening technology

- › Labels for blister packs and boxes
- › cardboard box labels
- › product labels

## Chemical industry

- › Ampules, glass, drum and packaging labels
- › hazardous material warnings
- › warning decals

## Retail and wholesale

- › Price stickers
- › product labels
- › barcode printing

## Electrical and electronic industries

- › Type plates
- › device labels
- › operating instructions
- › housing labels
- › cable stickers

## Airports, airlines

- › Luggage tags
- › cargo stickers
- › container stickers
- › spare parts tags
- › catering labels

## Nurseries

- › Plastic stickers for flower pots
- › plants and trees
- › decorative tags

## Gift items

- › Order-specific product and design labels

## Plastic

- › Labels for plastic boxes
- › boxes, drums and packaging, also for those stored outside

## Medical, hospitals

- › Patient bracelets
- › stickers for blood bags
- › content labels

## Metal processing

- › Material labeling
- › warehouse labeling

## Food and luxury goods industry

- › Product, ingredients and shelf life information
- › frozen food labels
- › wine and liquor labels
- › e.g. bakeries, butchers

## Natural and organic foods

- › Customized labels for small packages
- › ingredient information, e.g. tea, herbs, candy

## Paper, textiles, cloth

- › Labels for repackaged items
- › textile labels
- › tear-off labels

## Toys, furniture

- › Tags
- › set-up instructions
- › product notices

## Transportation, logistics

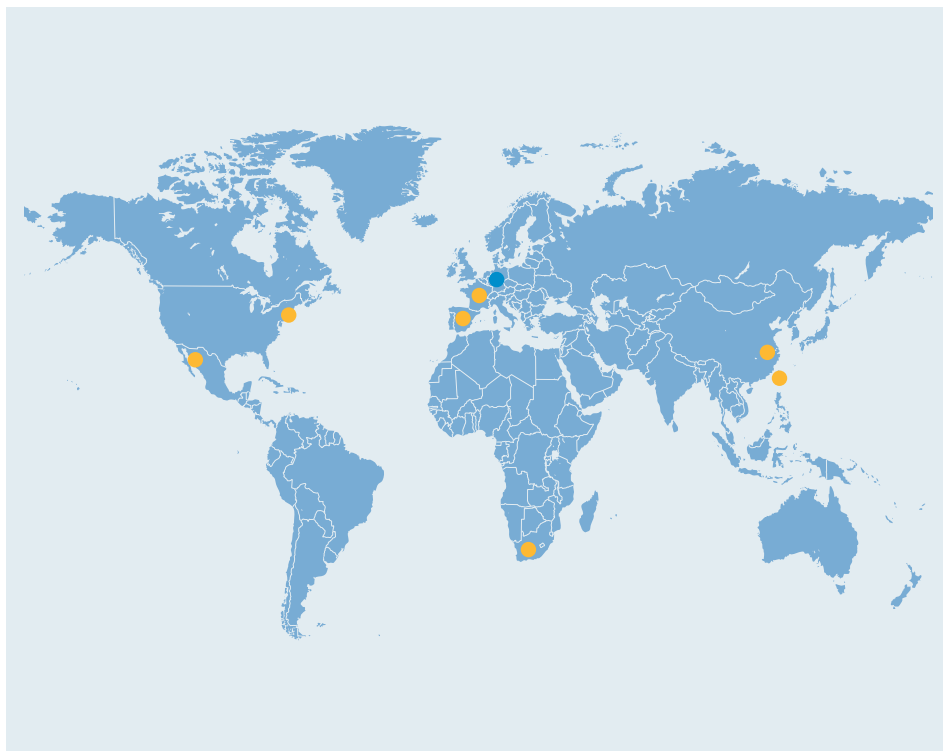
- › Shipping labels
- › address labels
- › pallet stickers
- › barcode stickers
- › warehouse location labels

● Headquarters in Germany

● cab subsidiaries

350 distribution partners  
in more than 80 countries.

*cab is represented in every active  
commercial center - worldwide.*



[www.cab.de](http://www.cab.de)

#### Germany

cab Produkttechnik  
GmbH & Co KG  
Postfach 1904  
76007 Karlsruhe  
Wilhelm-Schickard-Str. 14  
76131 Karlsruhe  
Telefon +49 721 6626-0  
Telefax +49 721 6626-249  
[www.cab.de](http://www.cab.de)  
[info@cab.de](mailto:info@cab.de)

*Representatives in other  
countries on request.*

#### France

cab technologies s.a.r.l.  
67350 Niedermodern  
Téléphone +33 388 722 501  
[www.cab.de/fr](http://www.cab.de/fr)  
[info.fr@cab.de](mailto:info.fr@cab.de)

#### Spain

cab España S.L.  
08304 Mataró (Barcelona)  
Teléfono +34 937 414 605  
[www.cab.de/es](http://www.cab.de/es)  
[info.es@cab.de](mailto:info.es@cab.de)

#### USA

cab Technology Inc.  
Tyngsboro MA, 01879  
Phone +1 978 649 0293  
[www.cab.de/us](http://www.cab.de/us)  
[info.us@cab.de](mailto:info.us@cab.de)

#### South Africa

cab Technology (Pty.) Ltd.  
2125 Randburg  
Phone +27 11-886-3580  
[www.cab.de/za](http://www.cab.de/za)  
[info.za@cab.de](mailto:info.za@cab.de)

#### Asia 亚洲

cab Technology Co, Ltd.  
**希爱比科技股份有限公司**  
Junghe, Taipei, Taiwan  
Phone +886 2 8227 3966  
[www.cab.de/tw](http://www.cab.de/tw)  
[info.asia@cab.de](mailto:info.asia@cab.de)

#### China 中国

cab (Shanghai) Trading Co., Ltd  
**铠博(上海)贸易有限公司**  
Phone +86 21 6236-3161  
[www.cab.de/cn](http://www.cab.de/cn)  
[info.cn@cab.de](mailto:info.cn@cab.de)

*This documentation and any the translations hereof are properties of cab GmbH & Co KG.*

*The replication, processing, reproduction or propagation in whole or in parts requires our prior written consent. © Copyright by cab/9008681.*

*All specifications on delivery, design and technical data are compiled to the best of our current knowledge and are subject to change without prior notice.*